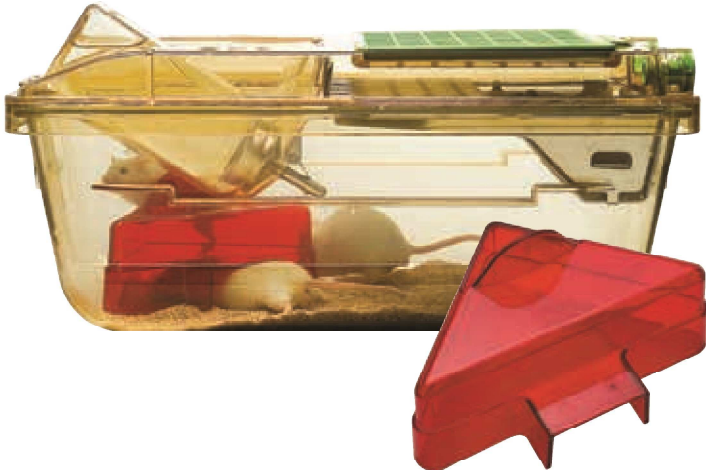


AMOUSEMENT



Let your mouse...
amouse!

MOUSE HOUSE

The MOUSE HOUSE provides a complex three-dimensional environment, within standard laboratory caging. It incorporates entrances, a shelf and a large nesting area. Its design maximises the use of floor area and encourages mice to zone their cage space.

An independent study concluded that with Mouse House "several positive behavioral traits had increased significantly", "mice used the third dimension" and "there was a continued interest and use of the Mouse House".

D. Key, A. Hewett - "Developing and testing a novel cage insert, the Mouse House, designed to enrich the lives of laboratory mice without adversely affecting the science" - Animal Technology and Welfare August 2002, 55-64

MOUSE MEZZANINE

The Mouse Mezzanine is attached to the wire bar lid and works as a lounge for the cage inhabitants.

It can be added to all the existing GM500 cages with standard lid.

Mouse Mezzanine is available in polysulfone or red polyetherimide to create a more intimate environment.



MOUSE POUCH LOFT

The Mouse Pouch Loft is a Dual-Use Mouse loft designed for facilities with Automatic Watering System that choose water pouches for special applications.

In combination with the $\frac{3}{4}$ length wire bar lid, it can accommodate the water pouch. If turned 180 it works as a loft in cages with AWS.



.....
ENRICHMENT
WITH AWS

.....
HOLDER FOR
WATER
POUCHES

MOUSE LOFT MOUSE BALCONY

The Mouse Loft and the Mouse Balcony are suspended environmental enrichments that create a more complex 3D environment in the cage in order to allow the mice to display positive behaviour patterns.

Both environmental enrichments are made of transparent polysulfone plastic for easy daily inspection and since they are placed in the front of the cage, they allow a very good visibility of the animals.



"The primary aim of environmental enrichment is to enhance animal well-being by providing animals with sensory and motor stimulation, through structures and resources that facilitate the expression of species typical behaviors and promote psychological well-being through physical exercise, manipulative activities, and cognitive challenges".

Guide for the Care and Use of Laboratory Animals: Eighth Edition" Committee for the Update of the Guide for the Care and Use of Laboratory Animals; National Research Council

"Establishments shall have appropriate enrichment techniques in place, to extend the range of activities available to the animals and increase their coping activities including physical exercise, foraging, manipulative and cognitive activities, as appropriate to the species".

DIRECTIVE 2010/63/EU OF THE EUROPEAN PARLIAMENT AND OF THE COUNCIL of 22 September 2010 on the protection of animals used for scientific purposes

"Cage enrichment and social interaction are considered to be of more value to the animal than simple floor space allocation".

Code of Practice for the Housing and Care of Animals, used in Scientific Procedures, Home Office Animals (Scientific Procedures)

"To reduce the incidence of stereotypic behaviour, nesting material, an incage shelter and environmental enrichment should be provided".

RRP Guideline 22: Guidelines for the Housing of Mice in Scientific Institutions Animal Welfare Branch - <http://www.animaethics.org.au>

"The Mouse House [...] resulted in significant increases in several positive behaviours and significant reductions in negative behaviours".

D. Key, A. Hewett "Developing and testing a novel cage insert, the Mouse House, designed to enrich the lives of laboratory mice without adversely affecting the science" Animal Technology and Welfare August 2002, 55-64