

**TECNIPLAST**  
*innovation through passion*

ZEBRAFISH HOUSING  
BREEDING SYSTEMS  
AUTOMATIC FEEDING  
SPECIAL APPLICATIONS  
WASHING AND LOGISTICS  
AMPHIBIANS HOUSING



 **AQUATIC  
SOLUTIONS**



## CONTACT US

**IN THE USA:** [info@tecniplastusa.com](mailto:info@tecniplastusa.com) • Toll Free 1-877-224-3669  
[www.tecniplastusa.com](http://www.tecniplastusa.com)

**IN CANADA:** [info@tecniplastcanada.com](mailto:info@tecniplastcanada.com) • Toll Free 1-855-347-8718  
[www.tecniplastcanada.com](http://www.tecniplastcanada.com)

[www.aquaticsolutionsusa.com](http://www.aquaticsolutionsusa.com)

# AQUATIC SOLUTIONS FOR FACILITIES OF ANY SIZE

ZEBRAFISH | XENOPUS | OTHER SPECIES



## PRODUCTS AND SYSTEMS FOR FACILITIES OF ANY SIZE!

### IN-HOUSE CAPABILITIES: Product Design, Engineering and Manufacturing.

## AQUATIC SOLUTIONS FROM START TO FINISH

WE ARE A FULL-SERVICE AQUATIC LAB EQUIPMENT PROVIDER. OUR COMPREHENSIVE IN-HOUSE CAPABILITIES ALLOW US TO ENSURE QUALITY CONTROL IN THE DESIGN, ENGINEERING AND MANUFACTURING OF OUR PRODUCTS. FROM BENCHTOP SYSTEMS TO FACILITY LAYOUT AND DESIGN, TO FULL CUSTOMIZATION, INSTALLATION, AND TRAINING, WE CAN ASSIST YOU WITH ANY AQUATIC PROJECT YOU MIGHT HAVE IN MIND.

**WE HAVE THE FLEXIBILITY TO PROVIDE WHAT YOUR NEED FOR**

- A start-up research lab
- A renovation project
- A building expansion or
- A brand new facility

## Index



**4** HOUSING

TANKS AND ACCESSORIES, HOUSING AND CENTRALIZED LIFE SUPPORT

**BREEDING 12**

BREEDING TANKS AND SYSTEMS



**17** FEEDING

AUTOMATED ZEBRAFISH FEEDING

**SPECIAL APPLICATIONS 21**

GENOTYPING TOXICOLOGY, SENTINEL AND PHOTOPERIOD



**25** WASHING

ALGAE AND BIOFILM REMOVAL

**AMPHIBIANS 29**

TANKS AND HOUSING SYSTEMS







**HOUSING, TANKS  
& ACCESSORIES**



**BENCHTOP**



**STAND ALONE RACK  
W/ACTIVE BLUE TECHNOLOGY**



- **MULTILINKING RACKS W/WATER TREATMENT UNITS**
- **CUSTOMIZED CENTRALIZED LIFE SUPPORT SYSTEMS**

# HOUSING SOLUTIONS

TELL US ABOUT YOUR NEXT PROJECT

FROM BENCHTOP SYSTEMS TO LARGE AND FULLY CUSTOMIZED LIFE SUPPORT HOUSING; WHETHER IT IS A RENOVATION, A BUILDING EXPANSION OR A BRAND NEW FACILITY, WE HAVE THE FLEXIBILITY TO MATCH YOUR NEEDS

Active Siphon facilitates effective debris removal

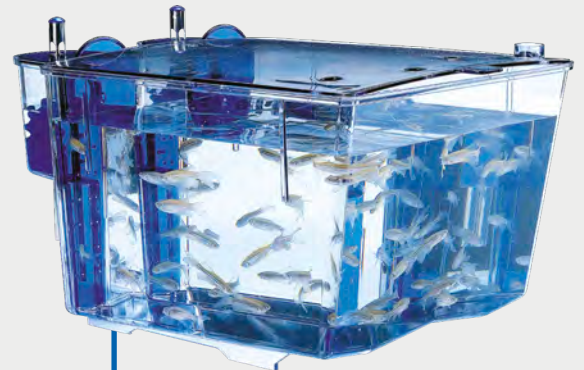
INNOVATIVE "CLEAN TANK" TECHNOLOGY IS ACHIEVED BY COMBINING OUR SPECIFIC TANK DESIGN AND COLOR WITH OUR ACTIVE SIPHON SYSTEM.



1.1 LITER



3.5 LITER

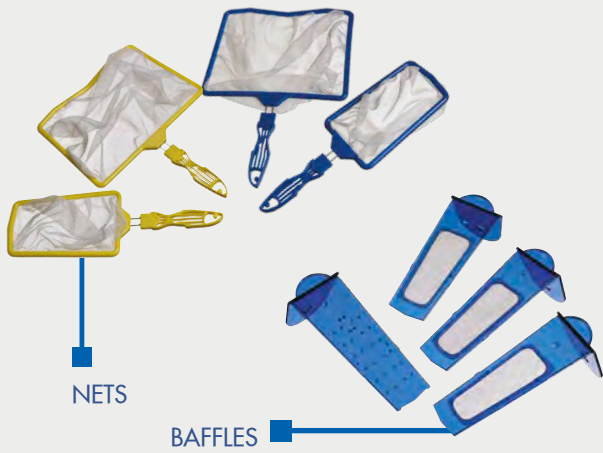


8 LITER

## TANKS

"CLEAN TANK" TECHNOLOGY. REDUCED ALGAE GROWTH. AUTOCLAVABLE.

- Tank capacity 1.1 L, 3.5 L and 8.0 L
- Tank dividers available for 1.1 and 3.5 L tanks
- Autoclavable
- V-channel bottom for maximum cleanability
- Made of certified blue polycarbonate and polysufone which help reduce algae growth



## ACCESSORIES

VAST SELECTION OF AUTOCLAVABLE ITEMS

- Nets for 1.1, 3.5 and 8 L tank
- Baffles in 300, 500 and 800 $\mu$

## LOGISTICS

ADD EFFICIENCY TO YOUR DAILY OPERATIONS

- Breeding transport trolleys
- Adjustable shelves and drainage receptacle



## BENCHTOP

COMPACT HOUSING SOLUTION FOR SMALL LABS AND QUARANTINE NEEDS

- Holds 3.5 and 8 L tanks. Multiple configurations
- Automatic water exchange
- Complete filtration. High disinfection rate
- Monitoring and automatic buffering
- Painted 316L s/s rack with adjustable rubbered feet and tank identification

## ACTIVE BLUE STAND ALONE RACK

UNMATCHED SELF-CLEANING TECHNOLOGY. NO NEED FOR STOCKING CONSUMABLES!

- Multiple configurations for 1.1, 3.5, and 8.0 L tanks
- Mechanical drum filtration at rack level automatically removes suspended solids from the filter screen
- The highest UV disinfection rate on the market
- Touchscreen and remote monitoring system
- Provides consistent quality water





## SYSTEMS AND RACKS DESIGNED WITH HIGH QUALITY AND FLEXIBILITY IN MIND

### DURABLE AND STURDY

OUR RACKS ARE BUILT WITH EPOXY COATED 316L STAINLESS STEEL WHICH MAKES THEM HIGHLY RESISTANT TO HUMID AND WET ENVIRONMENTS.

### FLEXIBLE DESIGN

OUR STAND ALONE AND MULTILINKING RACKS ACCOMMODATE TANKS OF DIFFERENT CAPACITIES ALLOWING MULTIPLE CONFIGURATIONS.

### UNIQUE WATER LEVEL CONTROL NO HOSES!



UNMATCHED PUSH/PULL VALVE WITH ON/OFF PLUNGER AND FINE TUNING WATER FLOW CONTROL AT TANK LEVEL FOR GREATER SAFETY AND CONVENIENCE.

### ZEBTEC ACTIVE BLUE STAND ALONE

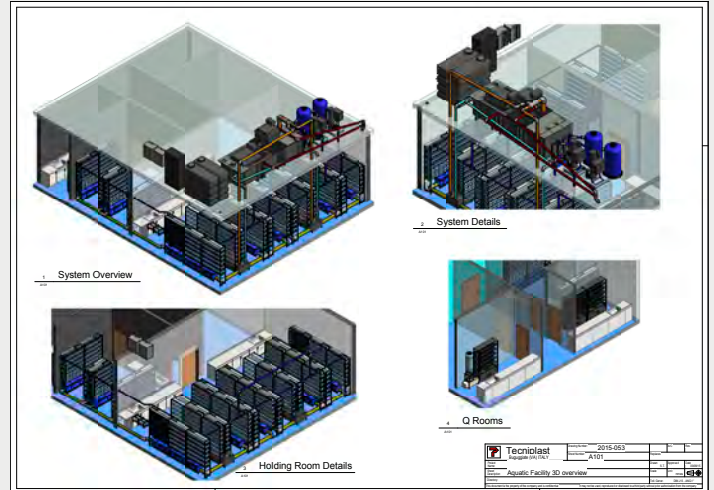
- Positively impacts research
- Greatly reduces running costs

## 3D ARCHITECTURE LAYOUT EXPLORATION AND DESIGN

Have realistic view of your finished facility before construction

WORK WITH OUR PROJECT MANAGEMENT IN THE PLANNING PHASE AND EXPLORE THE POSSIBILITIES FOR YOUR LAB'S CONFIGURATION.

TOGETHER, WE CAN ANALYZE AND DETERMINE YOUR FACILITY'S OPTIMAL CONFIGURATION BY USING OUR 3D LAYOUT EXPLORATION AND DESIGN SOFTWARE.



## MULTILINKING SYSTEM WITH WATER TREATMENT UNIT (WTU)

RECOMMENDED FOR MEDIUM SIZE LABS. REDUCED FOOTPRINT. EASY TO INSTALL. EASY TO MAINTAIN.

- Flexible solution for scalable growth up to six racks
- Multiple configurations for 1.1, 3.5, and 8.0 L tanks
- Dedicated water treatment unit (WTU)
- Water flow control & constant pressure at tank level
- Automatic water exchange at precise intervals
- Carbon filtration and high UV disinfection
- Pre-filtration and filtration at multiple levels
- Redundancy for ultimate safety

A flexible system for scalable growth!



## STANDARD PALLETIZED Centralized Life Support (CLS)

PALLETIZED OPTION UP TO 15 MULTI-LIKED RACKS

- Flexible solution for scalable growth up to 15 racks
- Water flow control & constant pressure at tank level
- Redundancy for ultimate safety
- Advanced monitoring with remote capabilities
- Compact, pre-built unit with mechanical filtration, carbon filtration, and high UV disinfection
- Optional mechanical drum filtration

## FULLY CUSTOMIZED LIFE SUPPORT

CUSTOM SOLUTION FOR MEDIUM/LARGE FACILITIES

- Built and designed based on the lab's needs and the building's requirements and configuration
- Software based system with user-friendly touchscreen
- Advanced monitoring with remote capabilities
- Automatic and gradual water exchange
- Self cleaning filtration system
- Pump control with Variable Frequency Drives (VFD)
- Redundancy for ultimate safety





**BREEDING  
TANKS**



**iSPAWN-S**



**iSPAWN**

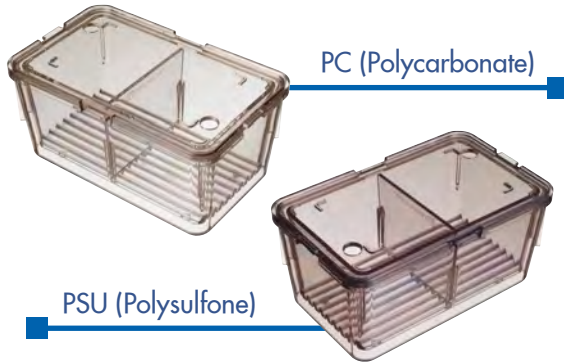
# BREEDING SOLUTIONS

IMPROVED BREEDING EFFICIENCY  
THROUGH INNOVATIVE SYSTEMS  
THAT PROMOTE THE WELFARE  
AND CARE IN THE MANAGEMENT  
OF ZEBRAFISH

FROM SMALL BREEDING TANKS  
TO LARGE BREEDING AND EMBRYO  
COLLECTION SYSTEMS, WE HAVE THE  
SOLUTIONS THAT MEET YOUR RESEARCH  
NEEDS, REDUCE LABOR COSTS,  
AND OPTIMIZE FOOTPRINT.

# BREEDING SOLUTIONS

OUR TANKS AND SYSTEMS ARE DESIGNED TO PROMOTE NATURAL SPAWNING BEHAVIOR AND THE WELFARE AND CARE OF ZEBRAFISH



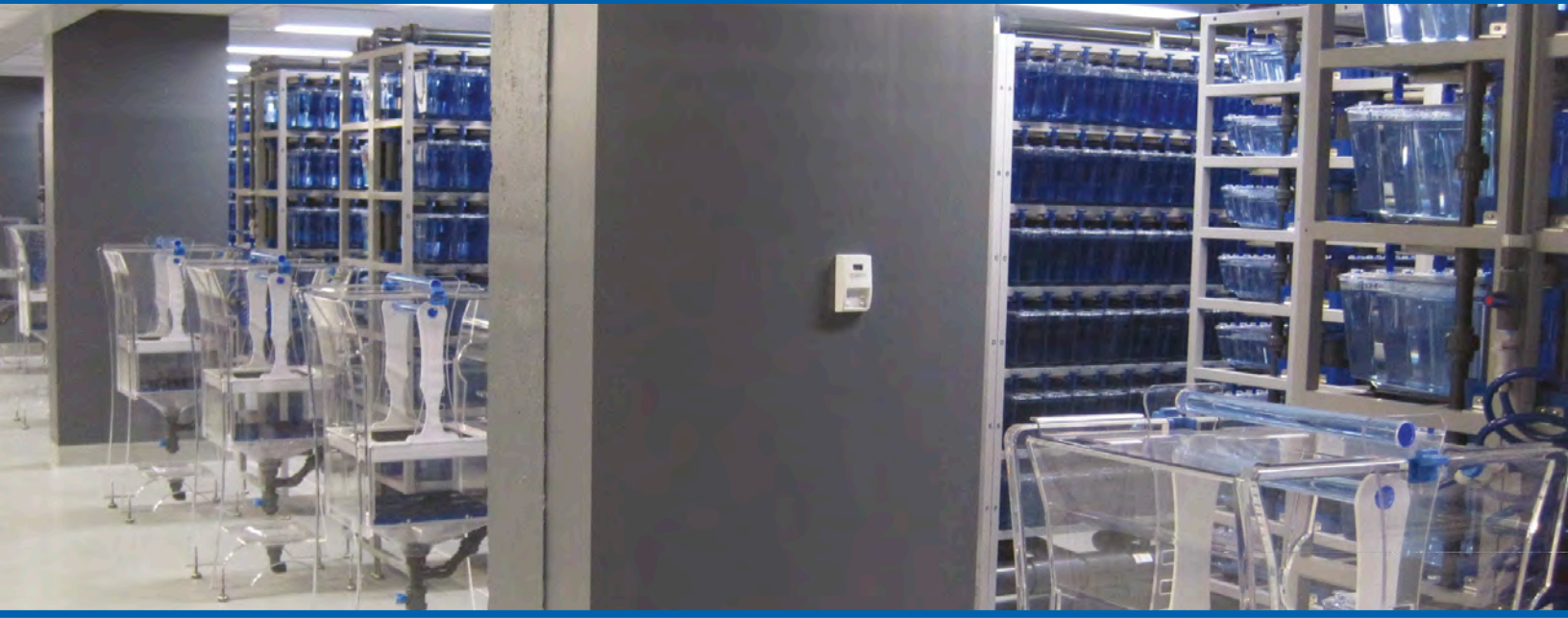
## BREEDING TANKS

INNOVATIVE TECHNOLOGY FOR IMPROVING ZEBRAFISH BREEDING

- Large selection to meet your needs: Pair breeding, small groups or large groups.
- Suitable for external or on-system breeding
- Available in capacities of 0.7 L, 1 L and 1.7 L
- Tank system comprises an external tank, an internal tank with perforated bottom, a divider, and a lid.

Check our 1.7 L tank designed with a long beach area and opaque grave-like bottom to promote spawning activity.

# THE MOST COMPREHENSIVE OFFERING OF BREEDING SYSTEMS



## ISPAWN-S

BENCHTOP SIZE FOR ZEBRAFISH SPAWNING AND EMBRYO COLLECTION IN BATCHES OF THOUSANDS AT A TIME

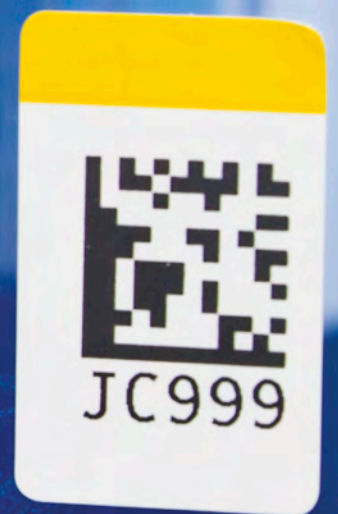
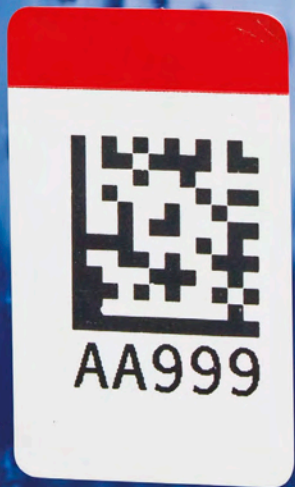
- 13-liter water capacity. Up to 20 breeding pairs.
- Embryo collection in batches to match your needs
- Flexible settings: static or re-circulating water
- Promotes zebrafish's natural spawning behavior
- Reduced labor. Minimal footprint. Easy to use.



## ISPAWN

DESIGNED BY RESEARCHERS; ALLOWS MAXIMUM AND MORE EFFICIENT SPAWNING AND EMBRYO COLLECTION.

- 60-liter vessel holds up to 200 fish
- Scientifically proven performance and effectiveness
- Flexible settings: static or re-circulating water
- Promotes the zebrafish's natural spawning behavior
- Reduced labor. Minimal footprint. Easy to use.



7



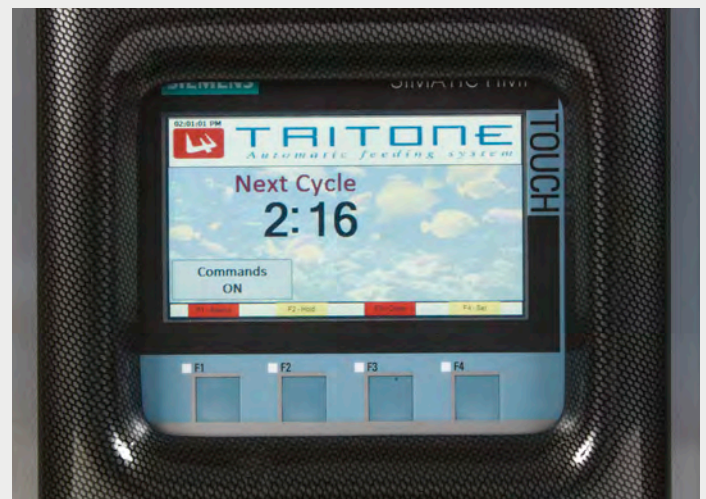
# AUTOMATED FEEDING SYSTEM



**TRITONE**

TRITONE, IS THE ONE AND ONLY  
AUTOMATED DIET DELIVERY  
SYSTEM FOR ZEBRAFISH LABS

- HELPS REDUCE FEEDING OPERATION COSTS
- ELIMINATES INCONSISTENCY ASSOCIATED WITH MULTIPLE OPERATORS
  - IMPROVES HYGIENE AT TANK LEVEL
  - IMPROVES ERGONOMICS
- IMPROVES THE SYSTEM'S WATER QUALITY



## TRITONE

### LIQUID AND MULTIPLE DRY DIETS DISTRIBUTION

- Distributes live diets and up to four (4) different pellet sizes of dry diets
- Utilizes programmable multi-label visual recognition
- Eliminates variability and inconsistency associated with multiple diet delivery operators
- Improves the tanks' hygiene, the water quality, and the overall ergonomics



## TRITONE ACCESSORIES

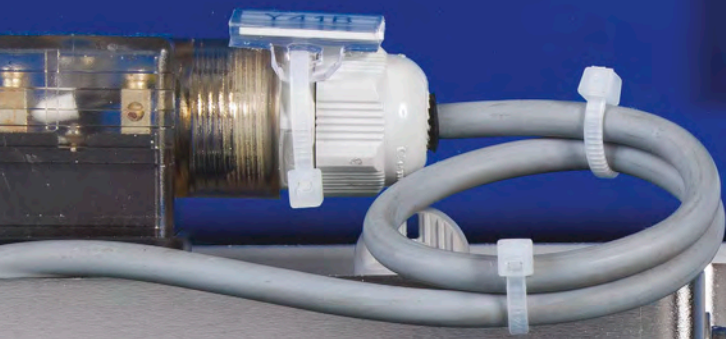
### TANK ID AND LABEL RECOGNITION FOR DIET DELIVERY

- Electrostatic, glue-free labels
- Color-coded labels to match food dispensers
- Optional ink ribbon and thermal transfer printer

### FOOD DISPENSERS

- Available in four colors to match color-coded labels
- Transparent container for greater visibility
- Entirely made of AUTOCLAVABLE plastic
- Durable, reliable, easy to use, and easy to maintain

Tritone greatly supports research through the standardization of diet delivery.



VAC EPDM  
le S12FU0838E230R  
2 bar P.C

DL7 590513

CE





GENOTYPING



TOXICOLOGY TESTING



SENTINEL SYSTEM



PHOTOPERIOD CABINETS

# SPECIAL APPLICATIONS

WE LISTENED TO YOUR NEEDS AND DEVELOPED SPECIAL APPLICATIONS THAT SUPPORT YOUR LAB OPERATIONS, PROTOCOLS AND RESEARCH.



## ZEBTEC GENOTYPING

PROMOTES OPTIMAL WATER QUALITY AFTER FIN CLIPPING.

- Six-row system with twelve sliding trays and twelve 0.7-liter tanks (with lid and divider) per tray
- Provides optimal quality water after fin clipping
- Tanks accommodate up to two fish
- Gentle water circulation by means of inlet valves
- Modular design for easy tank, tray or drawer frames removal
- Tank identification on rack
- Built with 316L stainless steel
- Available for Stand Alone, multilinking, palletized and fully customized systems

Special applications that support your lab operations, protocols and research





## ZEBTEC STAND ALONE SYSTEM FOR TOXICOLOGY

TEST DRUGS OR COMPOUNDS IN 30 INDIVIDUAL TANKS

- Three-row rack, each with ten 3.5-liter tanks
- Push/pull valve and tank overflow drainage
- 24-hour water parameters monitoring
- Flow-through (single pass) system without water recirculation
- Programmable for single or continuous water exchange at tank level
- Three-way solenoid valve to regulate water flow per row, independently
- Buffering for optimal control of temperature, pH, and water conductivity



## SENTINEL SYSTEM

POST-FILTRATION AND PRE-UV MONITORING

- Yellow rack with ten 3.5-liter tanks
- Fits centralize support systems or stand-alone racks
- Dedicated water supply and outlet with pre-filter
- Post-filtration and pre-UV disinfection exposure



## PHOTOPERIOD CABINETS

FULLY CONTROLLED MICROENVIRONMENT

- Enclosed and sealed system with single or multi-row configuration and LED light above each tank
- Eight light-cycles per rows (dusk and dawn included)
- No heat transfer from the lamp into the water
- Dedicated and user-friendly touch screen
- Sliding doors. System fully made of plastic.





# WASHING SOLUTIONS



**CABINET WASHER 650A**

## 650A CABINET WASHER: A BREAKTHROUGH IN WASHING TECHNOLOGY FOR AQUATIC RESEARCH FACILITIES

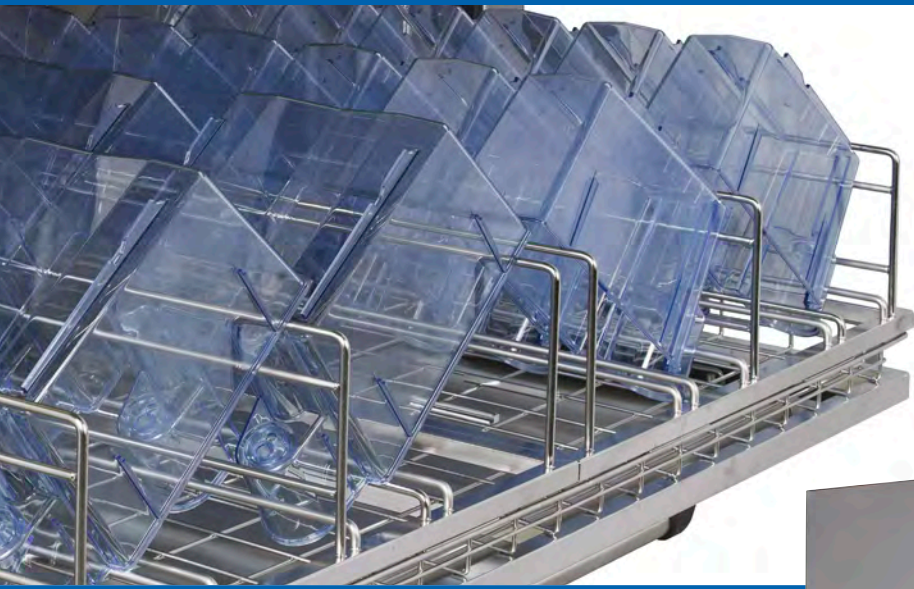
- TURN-KEY PATENTED PROCESS
- ELIMINATES ALGAE AND BIOFILM IN THE WASHING AND RINISNG CYCLE
- DELIVERS PERFECTLY CLEAN AND RESIDUE-FREE TANKS



## CABINET WASHER 650A

PATENTED SOFTWARE DRIVEN PROCESS  
EFFECTIVE MICROBIOLOGICAL DISINFECTION

- Eliminates algae and biofilm without scrubbing
- Washes up to 44 aquatic tanks per cycle
- Independently validated performance
- Flexibility to process aquatic accessories
- Remote monitoring capability



Independently certified performance  
for algae and biofilm removal and  
effective microbiological disinfection



Ask your representative about logistic carts and transport trolleys.





**TANKS**



**STAND ALONE RACK**



**MULTILINKING  
SYSTEM**



**STANDARD  
PALLETIZED CLS**



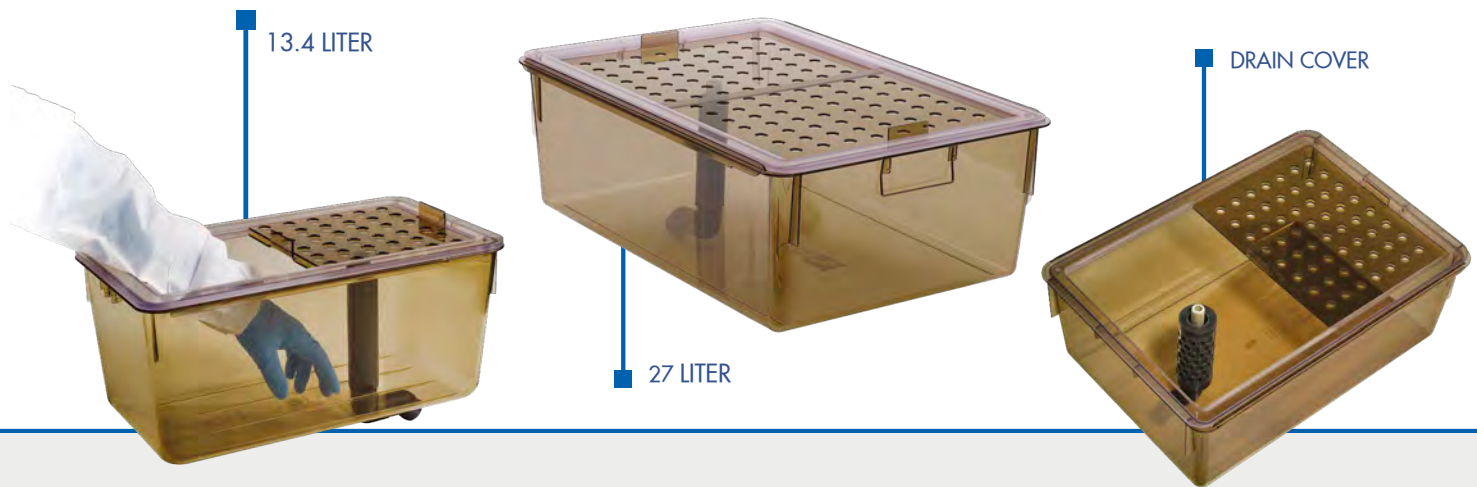
**FULLY  
CUSTOMIZED CLS**

# AMPHIBIANS

## AMPHIBIANS HOUSING SYSTEMS

- HIGH QUALITY MATERIALS
- ERGONOMIC DESIGN
- MONITORING SYSTEM WITH AUTOMATED REMINDERS FOR EASY MAINTENANCE
- FLEXIBILITY AT SYSTEM AND TANK LEVEL

- SMOKED COLOR • ROUNDED CORNERS • DOUBLE SLIDING LID



## STAND-ALONE RACK

- For small labs or reduced number of species
- Automatic water exchange
- Push/pull valve for fine-tuned water flow control
- User-friendly HMI touchscreen
- Pre-filtration, biological filtration and UV disinfection
- Buffering for temperature, pH, and conductivity control
- Painted 316L s/s rack with tank identification

## MULTILINKING SYSTEM

- Recommended for labs with up to 4 racks
- Integrated WTU with automatic water exchange
- Monitoring system with probes and touchscreen
- Push/pull valve for fine-tuned water flow control
- VFD submerged recirculating pumps
- Pre-filtration, biological filtration and UV disinfection
- Buffering for temperature, pH, and conductivity control
- Painted 316L s/s rack with tank identification

## TANKS

---

IMPROVED SAFETY AND ANIMAL WELFARE. EASY MAINTENANCE. BETTER ERGONOMICS

- Available in 13.4 L and 27 L capacity
- Rounded corners for safety and easy maintenance
- Smoked color reduces algae growth and provides a comfortable environment for the animals
- Double sliding lid for easy access
- Internal double standpipe for routine on-system debris removal and tank draining
- Tanks can accommodate all life stages (ask for details)

Our tanks meet or exceed the housing guidelines for safety and animal welfare.



## STANDARD PALLETIZED CLS

---

- For facilities with more than 4 to 24 racks
- Mechanical and carbon filtration; high UV disinfection
- Pre-filtration and biological filtration at rack level
- Advanced monitoring system with remote control
- Recirculating pump redundancy for ultimate safety
- VFD submerged recirculating pumps
- Automatic water exchange at precise intervals
- Pressure equalizer and water flow control

## FULLY CUSTOMIZED CLS

---

- For large facilities with multiple racks
- Customization based on lab's needs or building's requirements and configuration
- Advanced monitoring system with remote control
- Recirculating pump redundancy for ultimate safety
- VFD submerged recirculating pumps
- Automatic water exchange at precise intervals
- Pressure equalizer and water flow control



---

## CONTACT US

**USA:** [info@tecniplastusa.com](mailto:info@tecniplastusa.com) • Toll Free 1-877-224-3669  
[www.tecniplastusa.com](http://www.tecniplastusa.com)

## CANADA

[info@tecniplastcanada.com](mailto:info@tecniplastcanada.com) • Toll Free 1-855-347-8718  
[www.tecniplastcanada.com](http://www.tecniplastcanada.com)

[www.aquaticsolutionsusa.com](http://www.aquaticsolutionsusa.com)

---

Tecniplast Headquarters

ITALY | Tel. +39 0332 809711 • [www.tecniplast.it](http://www.tecniplast.it) • E-mail: [info@tecniplast.it](mailto:info@tecniplast.it)