

TECNIPLAST CAGE BODIES ARE DESIGNED TO FACILITATE ANIMAL WELFARE, MEET RESEARCH REQUIREMENTS AND MINIMIZE EXPERIMENTAL VARIABLES. THE FOLLOWING CAGE BODY SELECTION IS GROUPED BY SPECIES. PLEASE NOTE THAT THE DIMENSIONS ARE IN THE FOLLOWING ORDER: L x W x H (LENGTH x WIDTH x HEIGHT).



POLYCARBONATE - PC
Transparent plastic with exceptional impact strength and heat resistance. It can be autoclaved at 121°C/250°F.



H-TEMP POLYSULFONE - PSU
Highly resistant plastic which can be autoclaved at 134°C/273°F. Considering an average of one autoclaving cycle/week, the threeyear warranty corresponds to 150 cycles at least.

PLASTIC SELECTION

Cage Body	Polycarbonate	H-Temp
1144B	-001	-00SU
1145T	-001	-00SU
1264C	-001	-00SU
1284L	-001	-00SU
1290D	-001	-00SU
1291H	-001	-00SU
2150E	-001	-00SU
2154F	-001	-00SU
1500U	-001	-00SU
1354G	-001	-
2000P	-001	-00SU

For automatic watering option, please contact your Tecniplast representative

* Please refer to Tecniplast warranty documents



M 1144B
331 x 159 x 132 mm
13.03 x 6.26 x 5.19 in
floor area: 335 cm²/51.92 in²



M 1145T
369 x 165 x 132 mm
14.53 x 6.49 x 5.19 in
floor area: 435 cm²/67.42 in²



M 1264C EUROSTANDARD TYPE II
268 x 215 x 141 mm
10.55 x 8.46 x 5.55 in
floor area: 370 cm²/57.35 in²



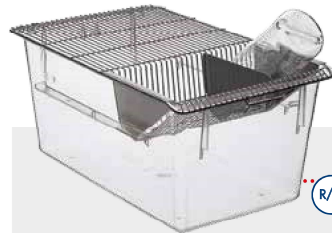
M 1284L EUROSTANDARD TYPE II L
365 x 207 x 140 mm
14.37 x 8.15 x 5.51 in
floor area: 530 cm²/82.15 in²



M 1290D EUROSTANDARD TYPE III
425 x 276 x 153 mm
16.73 x 10.87 x 6.02 in
floor area: 820 cm²/127.1 in²

Choose your animal...
Find your cage!

- M** MICE
- R/H** RATS/HAMSTERS
- GP** GUINEA PIGS



R/H 1291H EUROSTANDARD TYPE III H
425 x 266 x 185 mm
16.73 x 10.47 x 7.28 in
floor area: 800 cm²/124 in²



R/H 2150E
355 x 235 x 190 mm
13.98 x 9.25 x 7.48 in
floor area: 580 cm²/89.9 in²



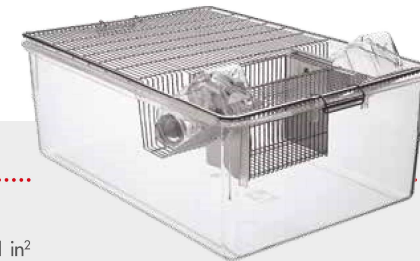
R/H 2154F
482 x 267 x 210 mm
18.98 x 10.51 x 8.27 in
floor area: 940 cm²/145.7 in²



GP 1500U EUROSTANDARD TYPE IV S
480 x 375 x 210 mm
18.89 x 14.76 x 8.27 in
floor area: 1500 cm²/232.5 in²



GP 1354G EUROSTANDARD TYPE IV
598 x 380 x 200 mm
23.54 x 14.96 x 7.87 in
floor area: 1820 cm²/282.1 in²



GP 2000P
612 x 435 x 216 mm
24.09 x 17.12 x 8.5 in
floor area: 2065 cm²/320.07 in²