

AIR HANDLING UNITS



WI FLOW



SMART FLOW



EASY FLOW



SKY FLOW



AS THE HEART OF AN IVC SYSTEM, THE PRIMARY OBJECTIVE OF ANY AIR HANDLING UNIT IS TO PROVIDE AND MAINTAIN A STABLE ENVIRONMENT FOR THE CAGE INMATES.

SAFETY AND TOTAL CONTROL AT YOUR FINGERTIPS, WHEREVER AND WHENEVER IS OUR LEITMOTIV.

FROM SMALL TO HUGE FACILITIES, TECNIPLAST IS READY TO SOLVE ANY NEED THROUGH THE MOST COMPLETE RANGE OF AIR HANDLING UNIT SOLUTIONS.



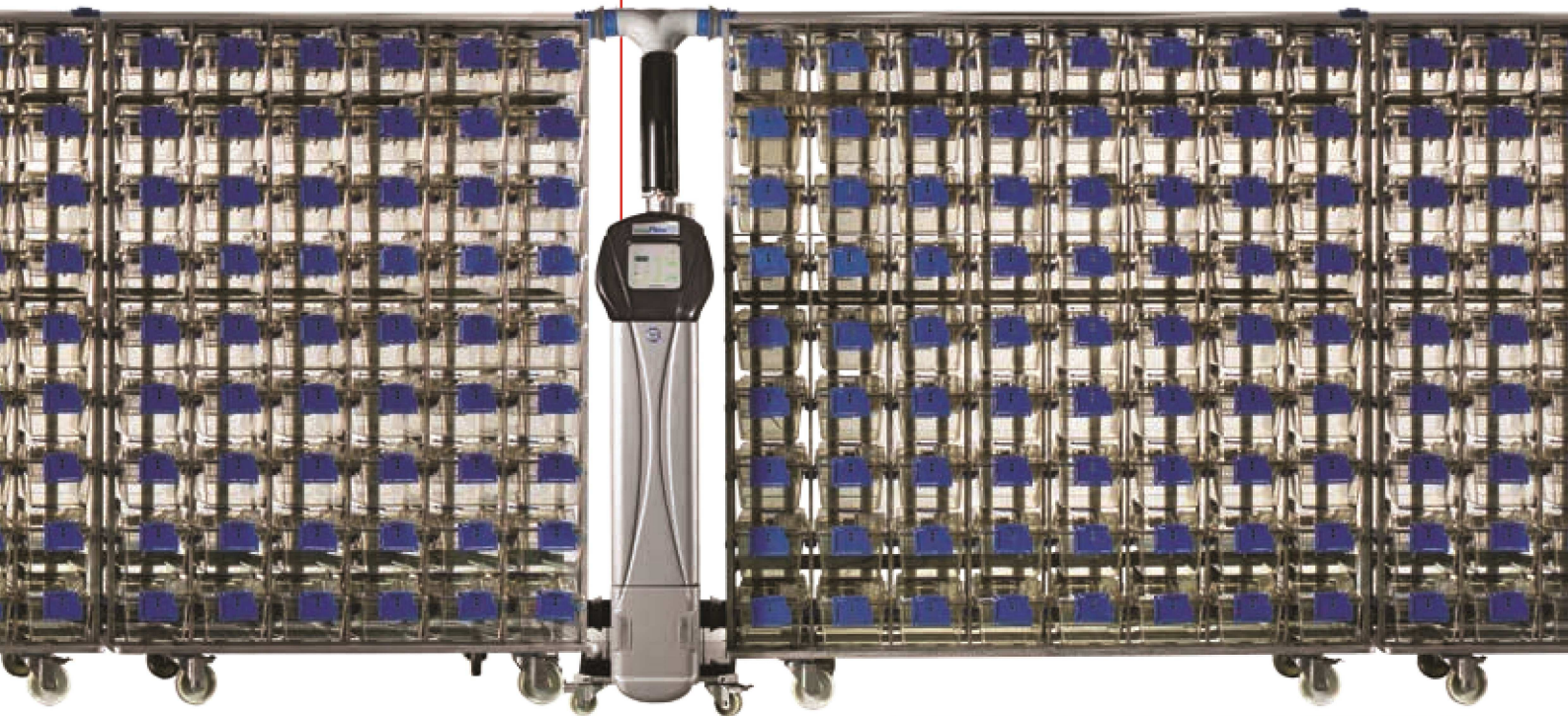
SMART FLOW

WI FLOW

WI FLOW, SMART FLOW, EASY FLOW AND SKY FLOW ARE THE LATEST GENERATION OF AIR HANDLING UNITS. MICROPROCESSOR DRIVEN (AUTOMATIC CONSTANT FLOW RATE AND FILTER LOAD COMPENSATION), THEY GUARANTEE SAFETY FOR ANIMALS, OPERATORS AND THE ENVIRONMENT.

- **WI FLOW**, THE NEW AHU DESIGNED TO BE CONTROLLED BY PORTABLE DEVICES, IS EQUIPPED WITH A STATE OF THE ART TOUCH PANEL
- **SMART FLOW** FEATURES A NEW GENERATION OF TOUCH SCREEN CONTROL PANELS OFFERING ADVANCED SETTING FEATURES AND ENHANCED FLEXIBILITY
- **EASY FLOW** IS OPTIMAL IN TERMS OF SIMPLICITY OF USE
- **SKY FLOW** CAN BE EITHER WALL MOUNTED, CEILING MOUNTED AND INTEGRATED INTO THE MEZZANINE

EASY FLOW



SAFE VENTILATION

- Stand-alone Air Handling Unit: Wi Flow, Smart Flow, Easy Flow and Sky Flow provide safe ventilation without transmitting vibrations to the rack, ensuring standardization of the experiment and stress-free animals
- Performance Monitoring Device (PMD) constantly controls blower and filters load status: monitored performances with an intuitive interface
- Every single air handling unit undergoes several tests including the DOP test proving the system filtration efficiency: validated safety for both operators and animals

LOW RUNNING COSTS

- Multilinking feature allows up to 4 single sided-racks (or 2 double-sided) to be served: reduction of maintenance and consumables costs
- New DC Electronically Commuted Motor (ECM): 50% less power consumption and 90% less heat loss than the previous generation of AHUs, guaranteeing longer lifespan

ERGONOMICS

- Control panel at eye level and easy pre-filter access: user-friendly system
- Light and easy to move

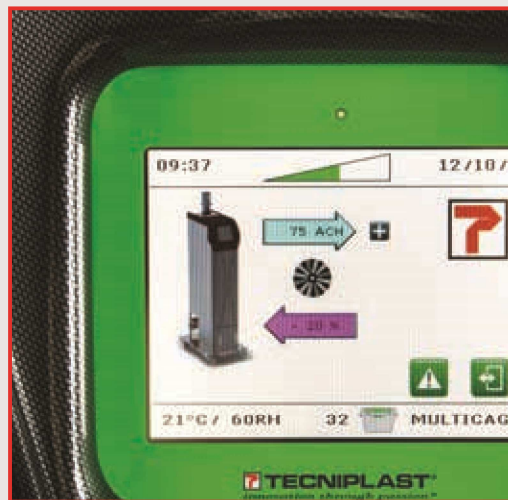
FUTURISTIC REMOTE CONTROL AND SAFE TECHNOLOGY

All the Air Handling Units are compatible with state-of-the-art technologies for remote monitoring and control:

- **ONE 2 ONE:** allows each and every AHU to be controlled via any portable device through a modern interface. One control device for all AHUs
- **GUARDIAN:** the system allows all the AHUs in the facility to be remotely monitored and controlled, forwarding notifications in case of alarm and recording all parameters' trends. Global view and remote control of all AHUs

SMART FLOW

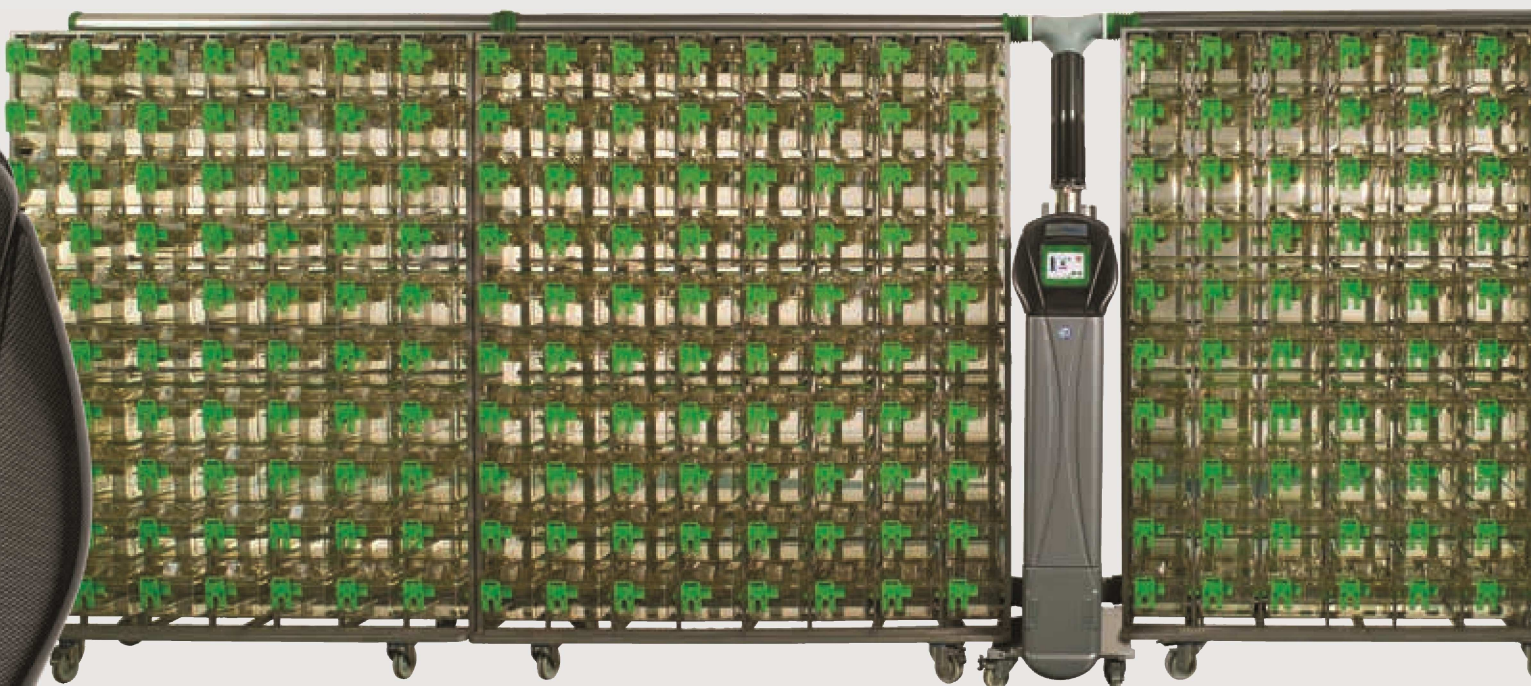
- All functions are accessible through a user-friendly touch screen: ease of use
- Wide variety of functions available and editable: ventilation parameters, alarm thresholds, passwords and many others
- PMD allows for blower and HEPA filter status monitoring with a user-friendly indicator: safe and monitored ventilation
- Compatible with the GATEWAY, that enables the **ONE 2 ONE** control via portable device and the **GUARDIAN** (optional)



USER-FRIENDLY TOUCH SCREEN



GATEWAY ENABLES THE **ONE 2 ONE** AND THE **GUARDIAN**



MULTILINKING FEATURE ALLOWS ONE AHU TO SERVE UP TO 4 SINGLE-SIDED RACKS (OR 2 DOUBLE-SIDED)