

INNER FITTING LID

COMPATIBLE WITH FILTER TOPS



SERIES -016/-116/-015/115

Standard lid with built-in u-shaped feed hopper and hinged divider which collapses to allow nesting of lids. Features solid sheet sides, swing-clip lock and bottle protection washer, designed to prevent chewing of non-metal tops. Series -015/-016 is without hinged divider and can be equipped with removable divider.

SERIES -014/-114

Same features like as series -116. The difference is the spring-clip closure. Series -014 is without hinged divider and can be equipped with removable divider.



REMOVABLE DIVIDER

Most of the wire lids or raised wire lids, without hinged divider, can be equipped with removable dividers which separate the lid built-in food hopper and the bottle holder.

OUTER FITTING LID

NOT COMPATIBLE WITH FILTER TOPS

SERIES -012

With built-in u-shaped feed hopper, solid sheet sides, swing-clip lock and push-pull action for quick access to cage occupants. The series can be equipped with removable divider.



SERIES -025

Flat lid without feed hopper. Designed for use with post-surgery animals or infusion work.

WIRE LID SELECTION AND REMOVALE DIVIDER

Cage body	Inner fitting lid with hinged divider	Inner fitting lid without hinged divider	Outer fitting lid without hinged divider	Removable divider	Flat lid	Species
1144B	- 116	- 016	-	1264C812	-	Mice
1145T	- 116	- 016	-	-	-	Mice
1264C	- 116	- 016	- 012	1264C812	- 025	Mice
1284L	- 116	- 016	-	1264C812	-	Mice
1290D 1291H*	- 116 [□]	- 016 [□]	- 012 [□]	1290D812 [□]	- 025 [□]	Mice Rats*** Hamsters
2150E	- 114	- 014	-	1290D812	-	Rats Hamsters
2154F	- 114	- 014	-	1290D812	- 025	Rats Hamsters
1500U**	- 116 ^{□□}	- 016 ^{□□}	-	1400U812	-	Rats Hamsters
1354G	- 115	- 015	- 012*	1354G812	-	Mice Rats Hamsters Guinea Pigs
2000P	- 214 ^{□□□} - 242 ^{□□□}	- 014	-	-	-	Rats Hamsters Guinea Pigs

□ 1291H to be ordered as 1290D -116/-016/-012/-812/-025
 □□ 1500U to be ordered as 1400U -116/-016
 □□□ 2000P -242 to be ordered with Drop-In Hopper -962 or -950
 * Can be used with mice
 ** Two dividers
 *** 1290D to be ordered with Raised Wire Lid for Housing Rats

For us
Quality is a must!

WE USE ONLY FIRST CHOICE CERTIFIED AISI 304 STAINLESS STEEL TO GUARANTEE UNIFORM QUALITY WITH MINIMAL DIRT TRAPS AND EXCELLENT STACKABILITY FOR EASE OF HANDLING AND STORAGE. OUR LIDS ARE DESIGNED TO ENSURE PERFECT FIT AND POSITIVE LOCKING THROUGHOUT THE COMPLETE PRODUCT RANGE

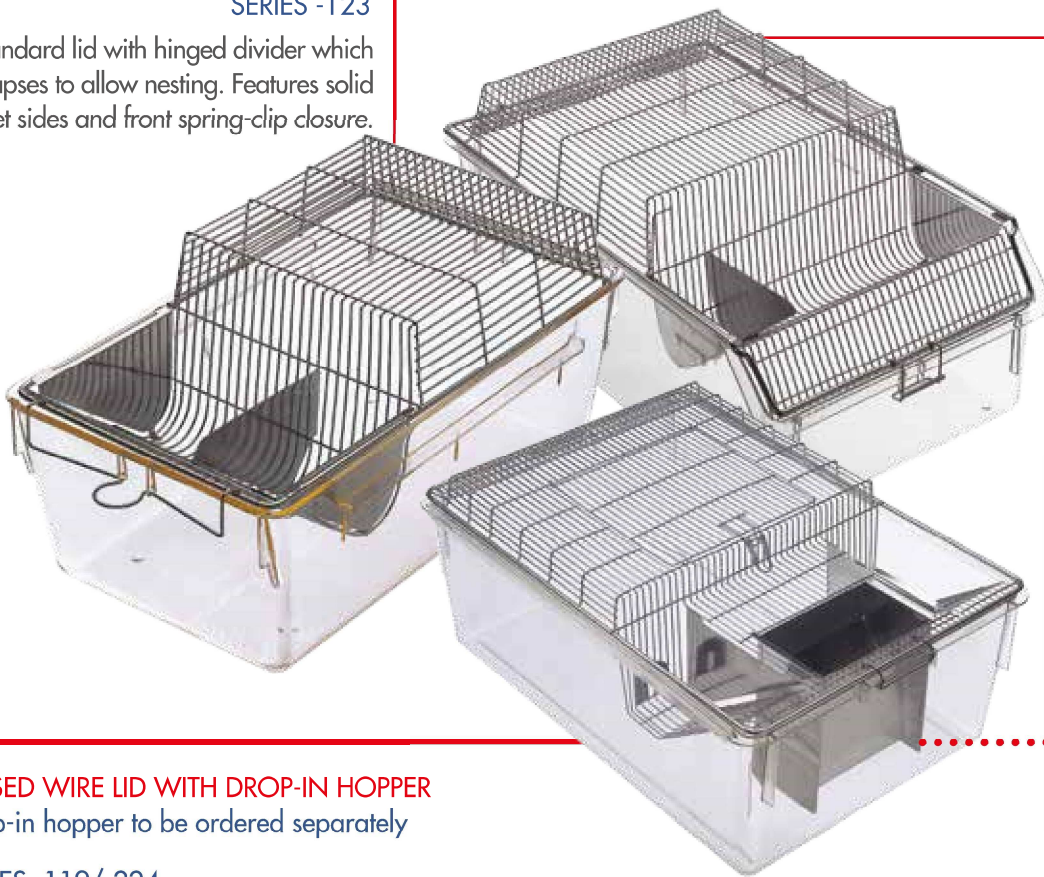
RAISED WIRE LID

DESIGNED FOR HOUSING RATS AND GUINEA PIGS
NOT COMPATIBLE WITH FILTER TOPS (EXCEPT FOR 2000P-224)

RAISED WIRE LID WITH BUILT-IN U-SHAPED FEED HOPPER

SERIES -123

Standard lid with hinged divider which collapses to allow nesting. Features solid sheet sides and front spring-clip closure.



SERIES -117/-120

Lid with hinged divider which collapses to allow nesting of lids. Features solid sheet sides and swing-clip lock. External fitting, with push-pull action for easy access to cage occupants.

RAISED WIRE LID WITH DROP-IN HOPPER

Drop-in hopper to be ordered separately

SERIES -119/-224

Features swing-clip lock, dual bottle depressions, allows push-pull action, plus top opening hatch for quick access to cage occupants



-962/-965



-950/-952

Cage body	Lid with divider	Lid without divider	Removable divider	Raised height (mm/in)	Top hatch access (mm/in)	Drop-in hopper for guinea pigs	Drop-in hopper for rats	Species
1290D 1291H*	-123°	-023°	-812°	60 / 2.36	-	-	-	Rats
1500U**	-224 ^{***}	-	-	40 / 1.57	165 x 220 / 6.49 x 8.66	-965 ^{***}	-952 ^{***}	Rats Guinea Pigs
1354G	-117 -120 -119*	-017 -020 -	-812 -812 -	25 / 0.98 70 / 2.75 70 / 2.75	- - 220x225 / 8.66 x 8.86	- - -965	- - -952	Rats Guinea Pigs
2000P	-224*	-	-	40 / 1.57	220 x 225 / 8.66 x 8.86	-962	-950	Rats Guinea Pigs

* 1291H to be ordered as 1290D -123/-023/-812

** 1500U to be ordered as 1400U -224

*** To be ordered as 1354G -965/-952

• Two dividers