



CONVENTIONAL CAGES





DISCOVER THE WIDEST RANGE OF CONVENTIONAL HOUSING SOLUTIONS PROMOTING ANIMAL WELFARE AND MEETING RESEARCH REQUIREMENTS

TECNIPLAST IS THE IDEAL PARTNER AT YOUR SIDE FOR YOUR HOUSING NEEDS.

WE PROVIDE SOLUTIONS FOR ANY CONVENTIONAL HOUSING REQUIREMENT:

- **STAINLESS STEEL RACKS WITH PLASTIC "T-PROFILE" SUSPENSION RUNNERS** DESIGNED FOR HUSBANDRY TO MEET HYGIENE NEEDS, OCCUPATIONAL HEALTH AND SAFETY REQUIREMENTS, WITH GREAT CONSIDERATION FOR ERGONOMIC ASPECTS;
- **LEAK-PROOF BOTTLES WITH SILICON RINGS** FEATURE POLISHED AISI 316 STAINLESS STEEL BOTTLE CAPS WITH CONE SHAPED DESIGN THAT MAXIMIZE WATER AVAILABILITY FOR ANIMALS;
- **AUTOCLAVABLE CARD HOLDERS** MADE IN PLASTIC ARE SUITABLE FOR LABELS OF ANY STANDARD SIZE, REDUCING NOISE THAT ARISE FROM THE USUAL STAINLESS STEEL CARD HOLDERS;
- **FILTER TOPS** WITH A FILTRATION AREA LARGER THAN THE CAGE FLOOR AREA MAXIMIZE AIR CIRCULATION AND GASES EXCHANGE;
- **THE WIDEST SELECTION OF ACCESSORIES, OPTIONS AND HOUSING COMBINATION** SATISFIES ANY RESEARCH AND HUSBANDRY NEED.

EVERYTHING UNDERGOES THE TOP QUALITY CHECK TO DELIVER THE RELIABILITY YOU EXPECT FROM US FOR A LONG-LASTING PRODUCT.

INDEX



5 SMALL RODENTS

- 6 • GUIDELINES
- 8 • CAGE RANGE
- 10 • LIDS
- 12 • BOTTLES, CAPS & LABEL HOLDERS
- 14 • ACCESSORIES
- 16 • RACKS
- 20 • DRAWER STYLE

23
RABBITS,
GUINEA PIGS
& FERRETS

- 24 • R-SUITE
- 28 • GP-SUITE
- 30 • F-SUITE





GUIDELINES



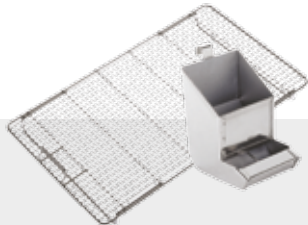
CAGE RANGE



LIDS



BOTTLES, CAPS
& LABEL HOLDERS



ACCESSORIES



RACKS



DRAWER
STYLE

SMALL RODENTS

BECAUSE CAGING EQUIPMENT IS ONE OF THE MOST IMPORTANT ELEMENTS IN THE PHYSICAL AND SOCIAL ENVIRONMENT OF THE ANIMALS USED IN EXPERIMENTAL PROCEDURES, TECNIPLAST HAS DEVELOPED, WITH CUSTOMERS' VALUED HELP, THE LARGEST RANGE OF CAGES

Let us help you
choosing the right cage
for your housing needs

TECNIPLAST CAGE RANGE MEETS
AND EXCEEDS CURRENT INTERNATIONAL
RULES AND GUIDELINES. TAKE A LOOK AT
THE TABLES TO FIND THE RIGHT CAGE
MEETING YOUR SPECIFIC NEEDS.

LEGEND

FOR EU, USA AND UK GUIDELINES

- 1144B
- 1145T
- 1264C
- 1284L
- 1290D
preferred choice for mice
- 1291H
preferred choice for rats
- 2150E
- 2154F
- 1500U
- 1354G
- 2000P

EU: Requirements for Establishments and for the Care of Accomodation of Animals, Annex III of the Directive 2010/63/EU of the European Parliament and of the Council on the protection of animals used for scientific purposes, 22 September 2010

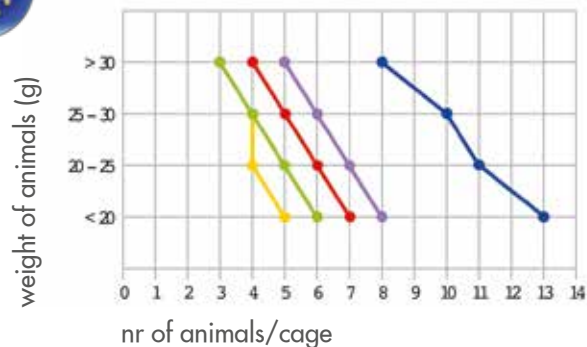
USA: Guide for the Care and Use of Laboratory Animals, Institute of Laboratory Animal Research - eighth edition, Division on Earth and Life Studies, National Research Council, National Academy Press, Washington D.C. 201

UK: Home Office - Animals (Scientific Procedures) Act 1986 Amendment Regulations 2012

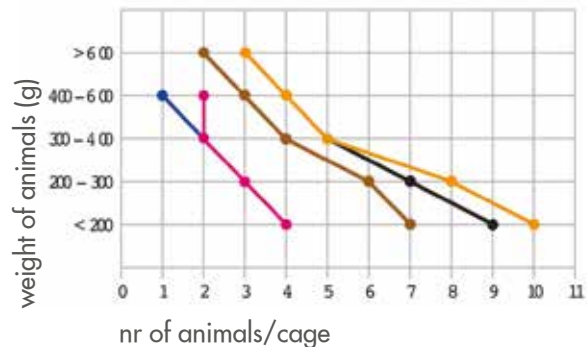


EU GUIDELINES

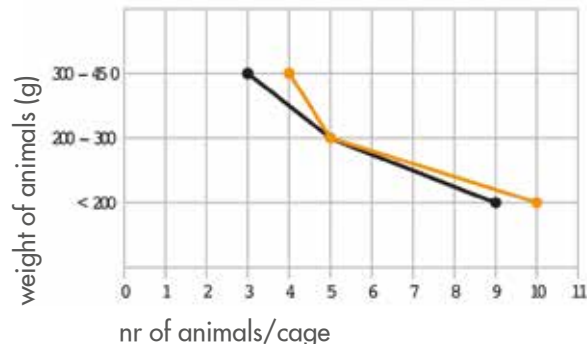
NUMBER OF MICE PER CAGE



NUMBER OF RATS PER CAGE



NUMBER OF GUINEA PIGS PER CAGE

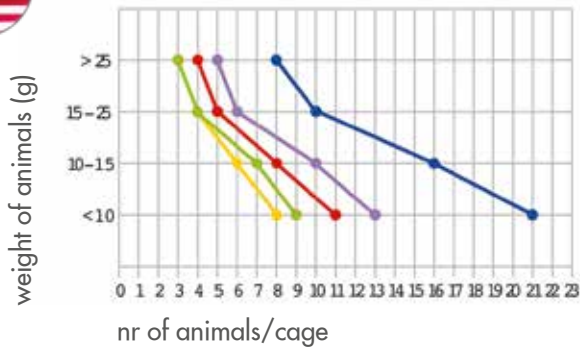


MIN FLOOR AREA AND HEIGHT

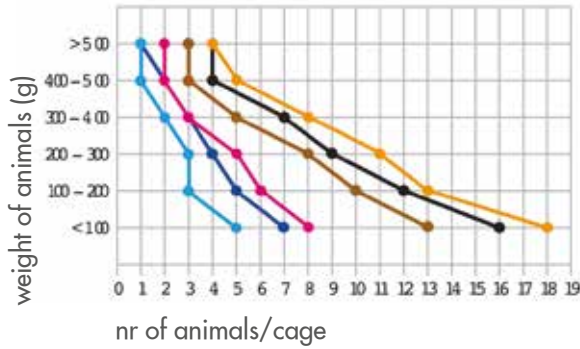
| Species | Body Weight (g) | Min Enclosure Size (cm ²) | Floor Area/Animal (cm ²) | Min Enclosure Height (cm) |
|-------------|-----------------|---------------------------------------|--------------------------------------|---------------------------|
| Mice | < 20 | 330 | 60 | 12 |
| | 20 - 25 | 330 | 70 | 12 |
| | 25 - 30 | 330 | 80 | 12 |
| | > 30 | 330 | 100 | 12 |
| Rats | < 200 | 800 | 200 | 18 |
| | 200 - 300 | 800 | 250 | 18 |
| | 300 - 400 | 800 | 350 | 18 |
| | 400 - 600 | 800 | 450 | 18 |
| | > 600 | 1500 | 600 | 18 |
| Hamsters | < 60 | 800 | 150 | 14 |
| | 60 - 100 | 800 | 200 | 14 |
| | > 100 | 800 | 250 | 14 |
| Guinea Pigs | < 200 | 1800 | 200 | 23 |
| | 200 - 300 | 1800 | 350 | 23 |
| | 300 - 450 | 1800 | 500 | 23 |
| | 450 - 700 | 2500 | 700 | 23 |
| | > 700 | 2500 | 900 | 23 |



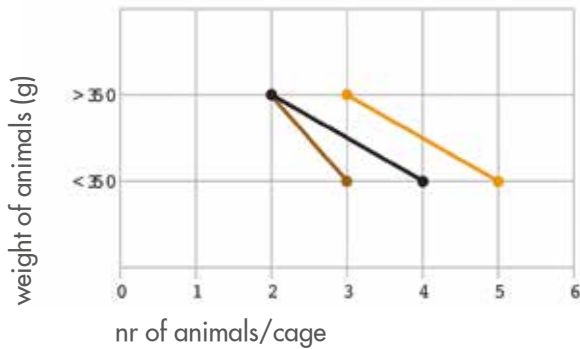
NUMBER OF MICE PER CAGE



NUMBER OF RATS PER CAGE



NUMBER OF GUINEA PIGS PER CAGE

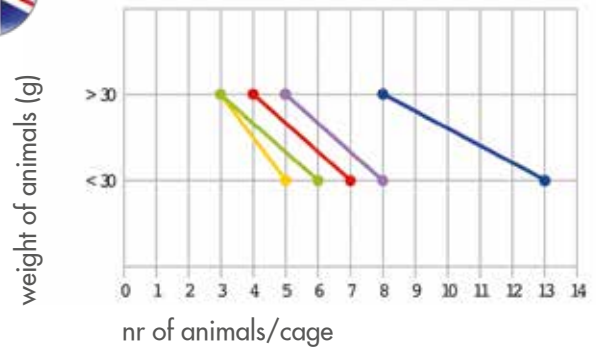


MIN FLOOR AREA AND HEIGHT

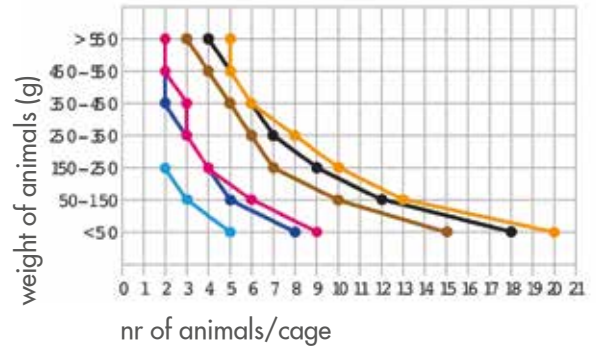
| Species | Body Weight (g) | Floor Area/Animal (cm ² /in ²) | Min Height (cm/inch) |
|-------------|-----------------|---|----------------------|
| Mice | < 10 | 38.7 / 6 | 12.7 / 5 |
| | 10 - 15 | 51.6 / 8 | 12.7 / 5 |
| | 15 - 25 | 77.4 / 12 | 12.7 / 5 |
| | > 25 | ≥ 96.7 / ≥ 15 | 12.7 / 5 |
| Rats | < 100 | 109.6 / 17 | 17.8 / 7 |
| | 100 - 200 | 148.35 / 23 | 17.8 / 7 |
| | 200 - 300 | 187.05 / 29 | 17.8 / 7 |
| | 300 - 400 | 258 / 40 | 17.8 / 7 |
| | 400 - 500 | 387 / 60 | 17.8 / 7 |
| | > 500 | ≥ 451.5 / ≥ 70 | 17.8 / 7 |
| Hamsters | < 60 | 64.5 / 10 | 15.2 / 6 |
| | 60 - 80 | 83.8 / 13 | 15.2 / 6 |
| | 80 - 100 | 103.2 / 16 | 15.2 / 6 |
| | > 100 | ≥ 122.5 / ≥ 19 | 15.2 / 6 |
| Guinea Pigs | < 350 | 387 / 60 | 17.8 / 7 |
| | > 350 | ≥ 651.5 / ≥ 101 | 17.8 / 7 |



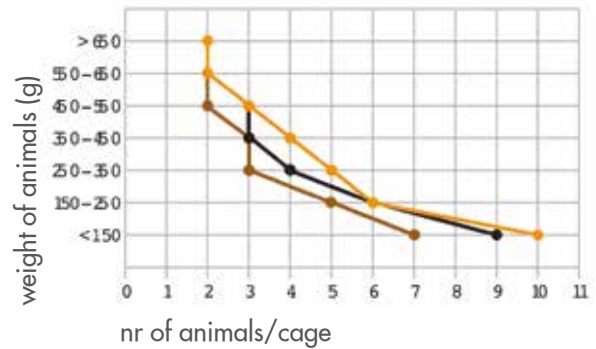
NUMBER OF MICE PER CAGE



NUMBER OF RATS PER CAGE



NUMBER OF GUINEA PIGS PER CAGE



MIN FLOOR AREA AND HEIGHT

| Species | Body Weight (g) | Min Floor Area/Animal when housed in groups (cm ²) | Min Floor Area/Animal when housed singly (cm ²) | Min Height (cm) |
|-------------|-----------------|--|---|-----------------|
| Mice | < 30 | 60 | 200 | 12 |
| | > 30 | 100 | 200 | 12 |
| Rats | < 50 | 100 | 500 | 18 |
| | 50 - 150 | 150 | 500 | 18 |
| | 150 - 250 | 200 | 500 | 18 |
| | 250 - 350 | 250 | 700 | 20 |
| | 350 - 450 | 300 | 700 | 20 |
| | 450 - 550 | 350 | 700 | 20 |
| > 550 | 400 | 800 | 20 | |
| Hamsters | < 60 | 80 | 300 | 15 |
| | 60 - 90 | 100 | 300 | 15 |
| | 90 - 120 | 120 | 300 | 15 |
| | > 120 | 165 | 300 | 15 |
| Guinea Pigs | < 150 | 200 | 700 | 20 |
| | 150 - 250 | 300 | 700 | 20 |
| | 250 - 350 | 400 | 900 | 20 |
| | 350 - 450 | 500 | 900 | 23 |
| | 450 - 550 | 600 | 900 | 23 |
| | 550 - 650 | 700 | 1000 | 23 |
| | > 650 | 750 | 1250 | 23 |

TECNIPLAST CAGE BODIES ARE DESIGNED TO FACILITATE ANIMAL WELFARE, MEET RESEARCH REQUIREMENTS AND MINIMIZE EXPERIMENTAL VARIABLES. THE FOLLOWING CAGE BODY SELECTION IS GROUPED BY SPECIES. PLEASE NOTE THAT THE DIMENSIONS ARE IN THE FOLLOWING ORDER: L x W x H (LENGTH x WIDTH x HEIGHT).



POLYCARBONATE - PC

Transparent plastic with exceptional impact strength and heat resistance. It can be autoclaved at 121°C/250°F.



M 1144B
331 x 159 x 132 mm
13.03 x 6.26 x 5.19 in
floor area: 335 cm²/51.92 in²



M 1145T
369 x 165 x 132 mm
14.53 x 6.49 x 5.19 in
floor area: 435 cm²/67.42 in²

Choose your animal...
Find your cage!

- M** MICE
- R/H** RATS/HAMSTERS
- GP** GUINEA PIGS



R/H 1291H
EUROSTANDARD TYPE III H
425 x 266 x 185 mm
16.73 x 10.47 x 7.28 in
floor area: 800 cm²/124 in²



GP 1500U
EUROSTANDARD TYPE IV S
480 x 375 x 210 mm
R/H 18.89 x 14.76 x 8.27 in
floor area: 1500 cm²/232.5 in²





PLASTIC SELECTION

| Cage Body | Polycarbonate | H-Temp |
|-----------|---------------|--------|
| 1144B | -001 | -00SU |
| 1145T | -001 | -00SU |
| 1264C | -001 | -00SU |
| 1284L | -001 | -00SU |
| 1290D | -001 | -00SU |
| 1291H | -001 | -00SU |
| 2150E | -001 | -00SU |
| 2154F | -001 | -00SU |
| 1500U | -001 | -00SU |
| 1354G | -001 | - |
| 2000P | -001 | -00SU |

H-TEMP POLYSULFONE - PSU

Highly resistant plastic which can be autoclaved at 134°C/273°F. Considering an average of one autoclaving cycle/week, the threeyear warranty corresponds to 150 cycles at least.

* Please refer to Tecniplast warranty documents

For automatic watering option, please contact your Tecniplast representative



M 1264C EUROSTANDARD TYPE II
268 x 215 x 141 mm
10.55 x 8.46 x 5.55 in
floor area: 370 cm²/57.35 in²



M 1284L EUROSTANDARD TYPE II L
365 x 207 x 140 mm
14.37 x 8.15 x 5.51 in
floor area: 530 cm²/82.15 in²



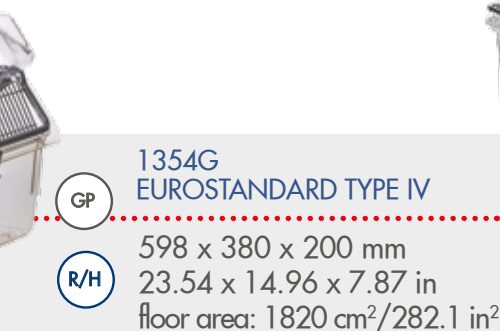
M
R/H 1290D EUROSTANDARD TYPE III
425 x 276 x 153 mm
16.73 x 10.87 x 6.02 in
floor area: 820 cm²/127.1 in²



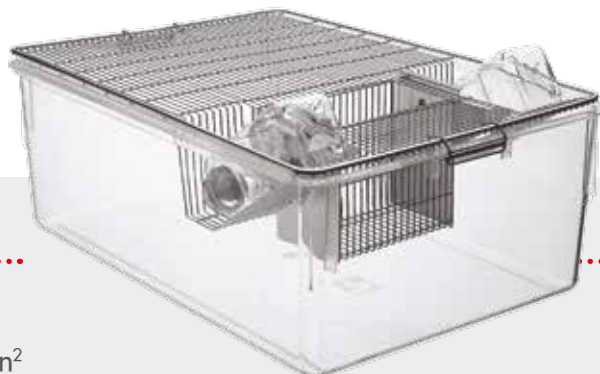
R/H 2150E
355 x 235 x 190 mm
13.98 x 9.25 x 7.48 in
floor area: 580 cm²/89.9 in²



R/H 2154F
482 x 267 x 210 mm
18.98 x 10.51 x 8.27 in
floor area: 940 cm²/145.7 in²



GP
R/H 1354G EUROSTANDARD TYPE IV
598 x 380 x 200 mm
23.54 x 14.96 x 7.87 in
floor area: 1820 cm²/282.1 in²



GP
R/H 2000P
612 x 435 x 216 mm
24.09 x 17.12 x 8.5 in
floor area: 2065 cm²/320.07 in²

INNER FITTING LID

COMPATIBLE WITH FILTER TOPS



SERIES -016/-116/-015/115

Standard lid with built-in u-shaped feed hopper and hinged divider which collapses to allow nesting of lids. Features solid sheet sides, swing-clip lock and bottle protection washer, designed to prevent chewing of non-metal tops. Series -015/-016 is without hinged divider and can be equipped with removable divider.

SERIES -014/-114

Same features like as series -116. The difference is the spring-clip closure. Series -014 is without hinged divider and can be equipped with removable divider.



REMOVABLE DIVIDER

Most of the wire lids or raised wire lids, without hinged divider, can be equipped with removable dividers which separate the lid built-in food hopper and the bottle holder.

OUTER FITTING LID

NOT COMPATIBLE WITH FILTER TOPS

SERIES -012

With built-in u-shaped feed hopper, solid sheet sides, swing-clip lock and push-pull action for quick access to cage occupants. The series can be equipped with removable divider.



SERIES -025

Flat lid without feed hopper. Designed for use with post-surgery animals or infusion work.

WIRE LID SELECTION AND REMOVALE DIVIDER

| Cage body | Inner fitting lid with hinged divider | Inner fitting lid without hinged divider | Outer fitting lid without hinged divider | Removable divider | Flat lid | Species |
|-----------------|---------------------------------------|--|--|-----------------------|--------------------|--------------------------------------|
| 1144B | - 116 | - 016 | - | 1264C812 | - | Mice |
| 1145T | - 116 | - 016 | - | - | - | Mice |
| 1264C | - 116 | - 016 | - 012 | 1264C812 | - 025 | Mice |
| 1284L | - 116 | - 016 | - | 1264C812 | - | Mice |
| 1290D 1291H* | - 116 [□] | - 016 [□] | - 012 [□] | 1290D812 [□] | - 025 [□] | Mice Rats*** Hamsters |
| 2150E | - 114 | - 014 | - | 1290D812 | - | Rats Hamsters |
| 2154F | - 114 | - 014 | - | 1290D812 | - 025 | Rats Hamsters |
| 1500U** | - 116 ^{□□} | - 016 ^{□□} | - | 1400U812 | - | Rats Hamsters |
| 1354G | - 115 | - 015 | - 012* | 1354G812 | - | Mice Rats Hamsters Guinea Pigs |
| 2000P | - 214** - 242 ^{□□□} | - 014 | - | - | - | Rats Hamsters Guinea Pigs |

[□] 1291H to be ordered as 1290D -116/-016/-012/-812/-025
^{□□} 1500U to be ordered as 1400U -116/-016
^{□□□} 2000P -242 to be ordered with Drop-In Hopper -962 or -950
 * Can be used with mice
 ** Two dividers
 *** 1290D to be ordered with Raised Wire Lid for Housing Rats

For us
Quality is a must!

WE USE ONLY FIRST CHOICE CERTIFIED AISI 304 STAINLESS STEEL TO GUARANTEE UNIFORM QUALITY WITH MINIMAL DIRT TRAPS AND EXCELLENT STACKABILITY FOR EASE OF HANDLING AND STORAGE. OUR LIDS ARE DESIGNED TO ENSURE PERFECT FIT AND POSITIVE LOCKING THROUGHOUT THE COMPLETE PRODUCT RANGE

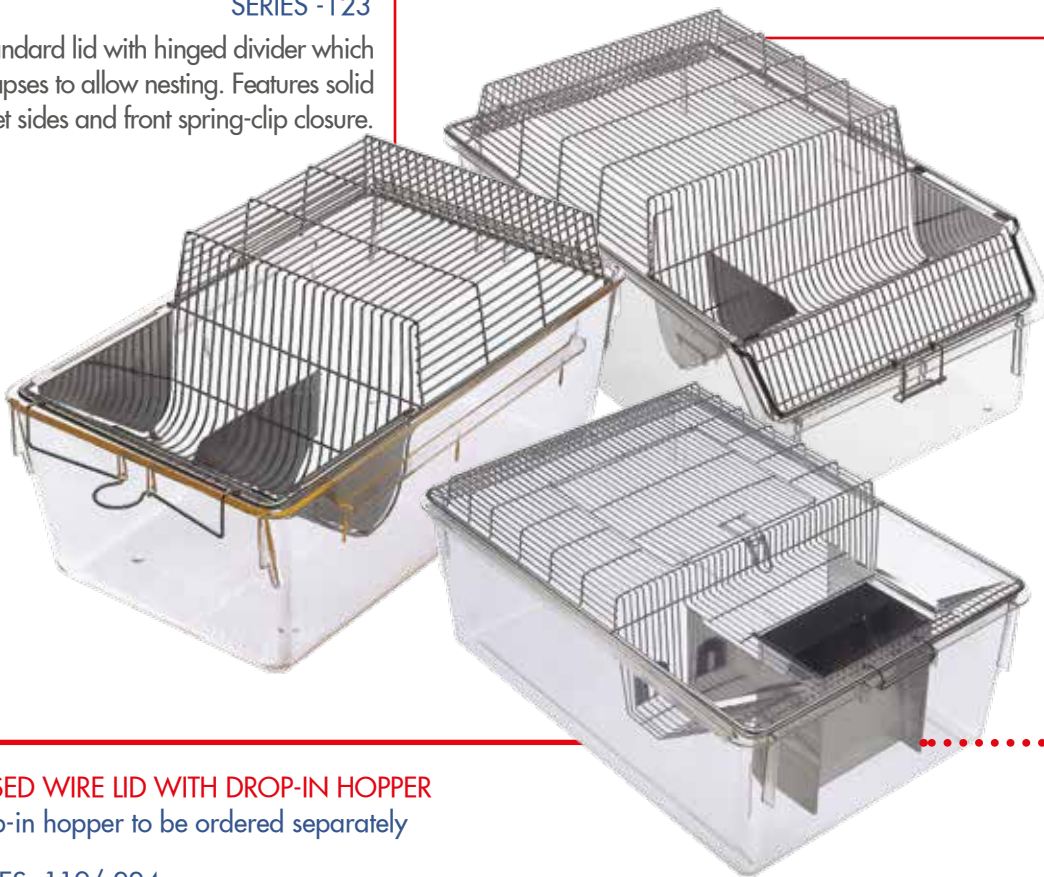
RAISED WIRE LID

DESIGNED FOR HOUSING RATS AND GUINEA PIGS
NOT COMPATIBLE WITH FILTER TOPS (EXCEPT FOR 2000P-224)

RAISED WIRE LID WITH BUILT-IN U-SHAPED FEED HOPPER

SERIES -123

Standard lid with hinged divider which collapses to allow nesting. Features solid sheet sides and front spring-clip closure.



SERIES -117/-120

Lid with hinged divider which collapses to allow nesting of lids. Features solid sheet sides and swing-clip lock. External fitting, with push-pull action for easy access to cage occupants.



-962/-965



-950/-952

RAISED WIRE LID WITH DROP-IN HOPPER

Drop-in hopper to be ordered separately

SERIES -119/-224

Features swing-clip lock, dual bottle depressions, allows push-pull action, plus top opening hatch for quick access to cage occupants

| Cage body | Lid with divider | Lid without divider | Removable divider | Raised height (mm/in) | Top hatch access (mm/in) | Drop-in hopper for guinea pigs | Drop-in hopper for rats | Species |
|-----------------|-----------------------|---------------------|-------------------|-------------------------------------|---------------------------------|--------------------------------|-------------------------|------------------------|
| 1290D 1291H* | -123° | -023° | -812° | 60 / 2.36 | - | - | - | Rats |
| 1500U** | -224°□□ | - | - | 40 / 1.57 | 165 x 220 / 6.49 x 8.66 | -965°□□□ | -952°□□□ | Rats Guinea Pigs |
| 1354G | -117 -120 -119° | -017 -020 - | -812 -812 - | 25 / 0.98 70 / 2.75 70 / 2.75 | - - 220x225 / 8.66 x 8.86 | - - -965 | - - -952 | Rats Guinea Pigs |
| 2000P | -224° | - | - | 40 / 1.57 | 220 x 225 / 8.66 x 8.86 | -962 | -950 | Rats Guinea Pigs |

□ 1291H to be ordered as 1290D -123/-023/-812

□□ 1500U to be ordered as 1400U -224

□□□ To be ordered as 1354G -965/-952

▪ Two dividers

BOTTLE SELECTION

Tecniplast bottles have a long lasting silicone ring enabling easy placing and removal of caps; the ring doesn't have to be removed for cleaning when bottles are autoclaved and features three protruding lips which prevent water from leaking.

Bottles are made of clear-glass Polycarbonate (PC), compliant with Title 21 FDA requirements and Autoclavable at 121°C /250°F for 20 minutes. The most popular sizes/styles are optionally available in H-Temp (PSU) and X-Temp (PPSU).

Our bottles feature:

- Consistent thickness
- Rigid walls, cannot be squeezed when handling
- Wide mouth (Ø 44.5 mm) to aid filling and emptying, whilst also ensuring effective washing
- Embossed, moulded graduations as aid to volume measurement



Graduated up to: 150 ml
Total volume: 190 ml
Ø 54 x 112 mm
2.12 x 4.41 in
Available:
■ (PC) ACBT0152

A



Graduated up to: 250 ml
Total volume: 280 ml
Ø 56 x 154 mm
2.2 x 6.06 in
Available:
■ (PC) ACBT0252

B



Graduated up to: 260 ml
Total volume: 300 ml
55 x 55 x 129 mm
2.16 x 2.16 x 5.08 in
Available:
■ (PC) ACBT0262
■ (PSU) ACBT0262SU

C



Graduated up to: 400 ml
Total volume: 450 ml
72 x 72 x 122 mm
2.83 x 2.83 x 4.8 in
Available:
■ (PC) ACBT0402
■ (PSU) ACBT0402SU

D



Graduated up to: 500 ml
Total volume: 600 ml
Ø 74 x 174 mm
2.91 x 6.85 in
Available:
■ (PC) ACBT0502

E



Graduated up to: 600 ml
Total volume: 720 ml
72 x 72 x 180 mm
2.83 x 2.83 x 7.09 in
Available:
■ (PC) ACBT0702
■ (PSU) ACBT0702SU

F



Graduated up to: 750 ml
Total volume: 900 ml
Ø 84 x 210 mm
3.31 x 8.27 in
Available:
■ (PC) ACBT0752

G



Graduated up to: 1000 ml
Total volume: 1100 ml
83 x 83 x 226 mm
3.27 x 3.27 x 8.89 in
Available:
■ (PC) ACBT1000
WITHOUT SILICONE RING

H

| Cage Body | Bottle |
|--------------------|--------|
| 1144B | A |
| 1145T | C |
| 1264C | B/D |
| 1284L | C/D |
| 1290D | E |
| 1291H | E/F |
| 2150E | C/D |
| 2154F | F |
| 1500U | F |
| 1354G | F/G/H |
| 2000P [▫] | G/H |

▫ Please contact us for compatibility with racks

TAKE A LOOK AT IWT WASHING BROCHURE TO FIND OUT OUR SOLUTIONS FOR BOTTLE WASHING





CAP SELECTION

Tecniplast metal bottle caps are totally made of polished AISI 316 Stainless Steel, to be corrosion resistant. The caps are chew-proof and have a one-piece sipper tube design. A perfect long-lasting product is guaranteed by our special production processes, constant quality standards and attention to detail. The cone shaped cap design, with the slope of the bottle, maximize water availability for animals.

| SS cap for bottles | Nylon cap for bottles | Hole (mm/in) | External diameter (mm/in) | Length (mm/in) |
|--------------------|-----------------------|--------------|---------------------------|----------------|
| ACCP2521 | ACCP2522 | Ø 1.8 / 0.07 | 6.5 / 0.25 | 25 / 0.98 |
| ACCP2511 | - | Ø 1.0 / 0.04 | 6.5 / 0.25 | 25 / 0.98 |
| ACCP50 | - | with balls | 8 / 0.31 | 50 / 1.97 |
| ACCP6521 | - | Ø 2.2 / 0.09 | 8 / 0.31 | 65 / 2.56 |



ACCP2521
Standard bottle cap
in S/S



ACCPLC01
Cap Remover



ACCP2511
For special applications,
where the control of water
consumption is essential



ACCP50
For special experiments,
where easy accessibility
and high water flow
rate of water is needed



ACCP6521
Specially designed
for small, weak
or post-surgery
animals



ACCP2522
Same design as
series ACCP2521,
but made of plastic
(shorter lifespan)

LABEL HOLDER SELECTION

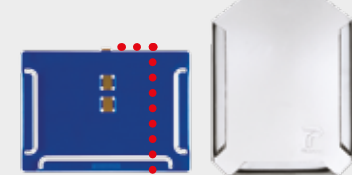
Vertical or horizontal, Tecniplast label holders are available with two different attachments:

WITH SPRING*



Allows label holder to swivel and enables writing without removing the card. Please note, that the spring design is only suitable for Tecniplast cages, with pre-drilled lugs for label holder attachments

WITH HOOK



Suitable for
any cage or lid

* not compatible with lids with spring clip closure

| Label holder | L x H (mm/in) | Style | Suits cards L x (H) (mm/in) |
|-----------------------|-------------------------|-----------------------------|-------------------------------------|
| ACPC0050 | 75 x 105 2.95 x 4.13 | S/S, vertical, hook | 70 x (50÷100) 2.75 x (1.97÷3.94) |
| ACPC0055 | 105 x 75 4.13 x 2.95 | S/S, horizontal, spring | 100 x (50÷90) 3.94 x (1.97÷3.54) |
| ACPC0060 | 75 x 105 2.95 x 4.13 | S/S, vertical, spring | 70 x (50÷100) 2.75 x (1.97÷3.94) |
| ACPC0056 | 130 x 77 5.12 x 3.03 | S/S, horizontal, spring | 125 x (50÷90) 4.92 x (1.97÷3.54) |
| ACPC0046 ^o | 80 x 60 3.15 x 2.36 | S/S, horizontal, spring | 75 x (50÷80) 2.95 x (1.97÷3.15) |
| ACPC0045PL | 105 x 75 4.13 x 2.95 | plastic, horizontal, hook | 100 x (50÷90) 3.94 x (1.97÷3.54) |
| ACPC0055PL | 105 x 75 4.13 x 2.95 | plastic, horizontal, spring | 100 x (50÷90) 3.94 x (1.97÷3.54) |
| ACPC0056PL | 130 x 77 5.12 x 3.03 | plastic, horizontal, spring | 125 x (50÷90) 4.92 x (1.97÷3.54) |
| ACPC0065PL | 130 x 77 5.12 x 3.03 | plastic, horizontal, hook | 125 x (50÷90) 4.92 x (1.97÷3.54) |

^o Wide format specific for cage 2000P

FILTER TOP

Tecniplast Filter Tops consist of three parts:

- Polysulfone (PSU) H-Temp Frame
- Polyester Filter Sheet with an atmospheric dust efficiency of 92% on 8-10µm particles
- Stainless Steel Retainer.

The patented Filter Top Cage System creates a protective barrier at cage level with major advantages for the protection of both animals and staff. Filter Top Cages can be autoclaved as complete units. The Filter Top can optionally be supplied with Nylon Lock Latches to prevent accidental dislodgement from the cage body. Due to their large filtration area, the filter tops maintain an efficient gaseous interchange with the external environment, resulting in lower levels of intra-cage NH₃ and CO₂, compared with competitor systems.

Protection is our profession!

Animal Protection

- Proven microbial protection; protection against pathogenic containments
- Better microenvironment inside the cage, due to reduced fluctuations in temperature and humidity, plus the elimination of draughts
- Enhanced animal health, reduced infant mortality and respiratory problems

Staff Protection

- Reduced air-borne contaminations in the working environment
- Significant lowering of respiratory associated allergenic reactions among animal care staff.

POLYESTER FILTER SHEET

available as spare part

S/S RETAINER



PSU H-TEMP
FRAME

POWDER FEEDER

Made of AISI 304 S/S, Tecniplast powder feeders are located inside the cages and hang at the cage body wall. Provided with one or more partitions, they can be accessed simultaneously by two or more animals. These feeders are designed with small compartments to prevent animals from entering and nesting and to reduce waste and spillage.



SERIES -927/-922/-923

Unique two-part design consisting of lower tray/hopper to be filled with powder feed, whilst the upper lid/divider section slides down directly onto the food. A series of S/S cross-wires on the bottom of the top section provides many small slots through which the animals feed, encouraging the consumption of fine particles (ensuring ingestion of test medium). Ideal for powder feed studies.

SERIES -929

Simple "J"-Design for use with lid Series -012, it features anti-spill lip at front and separation wires.

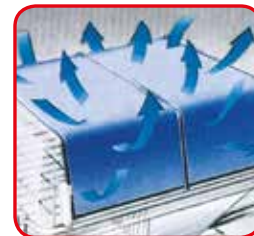
| Cage body | Powder feeder | Number of compartments | Species |
|-----------|---------------|------------------------|---------|
| 1264C | - 929 | 2 | Mice |
| 1290D | - 929 | 3 | Rats |
| | - 927 | 7 | Mice |
| 1291H | - 922 | 2 | Rats |
| | - 923 | 3 | Rats |
| 2150E | - 922 | 2 | Rats |
| 2154F | - 922 | 2 | Rats |
| | - 923 | 3 | Rats |
| 1354G | - 929 | 4 | Rats |



NYLON LOCK LATCH



optional:

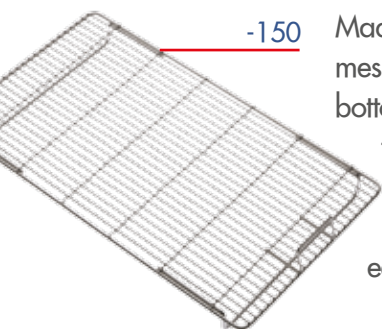


EFFICIENT GASEOUS INTERCHANGE

| Cage body | Autoclavable filter top | Autoclavable filter top with nylon lock latches | Replacement filter sheet |
|--------------------------|-------------------------|---|--------------------------|
| 1144B | - 400SU | - 400SUC | - 420R |
| 1145T | - 400SU | - 400SUC | - 420R |
| 1264C | - 400SU | - 400SUC | - 420R |
| 1284L | - 400SU | - 400SUC | - 420R |
| 1290D/1291H [□] | - 400SU [□] | - 400SUC [□] | - 420R [□] |
| 2150E | - 400SU | - | - 420R |
| 2154F | - 400SU | - | - 420R |
| 2000P | - 400SU | - | - 420R |

[□] 1291H to be ordered as 1290D -400SU/-400SUC/-420R

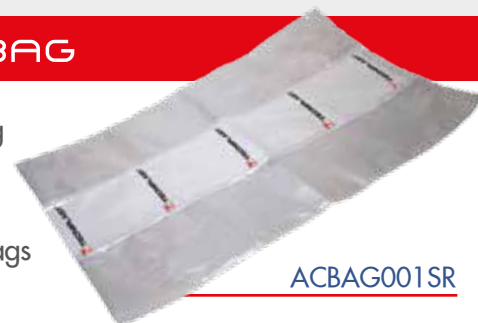
RAISED BOTTOM GRID



-150 Made of AISI 304 S/S wire mesh, it can be dropped into solid bottom cages to separate animals from their waste. It features 30mm elevation for mice and for rats/guinea pigs; easy to insert and remove.

PLASTIC BAG

Ideal for autoclaving cages when protective covering is needed, plastic bags feature breathable sides to prevent cage deformation.



ACBAG001SR

| Cage Body | Raised bottom grid |
|-----------|--------------------|
| 1144B | - 150 |
| 1145T | - 150 |
| 1264C | - 150 |
| 1284L | - 150 |
| 1290D | - 150 |
| 1291H | - 150 |
| 2150E | - 150 |
| 2154F | - 150 |
| 1500U | - 150 |
| 1354G | - 150 |

MOUSE HOUSE



It provides a complex three-dimensional environment within standard laboratory caging. The Mouse House incorporates entrances, a shelf and a large nesting area. Its design maximises the use of floor area and encourages mice to zone their cage space.

SMALL RODENTS • RACKS

TECNIPLAST RACKS ARE ALL MADE OF AISI 304 S/S. IT IS POSSIBLE TO CHOOSE AMONG DIFFERENT TYPES OF RACK:

- RUNNER STYLE
- ADJUSTABLE SHELF STYLE
- DEMOUNTABLE SHELF STYLE
- WELDED SHELF STYLE



NYLON RUNNERS



POLYURETHANE
COATED CASTORS



BUMPER



RUNNER STYLE RACK

Tecniplast AISI 304 Stainless Steel racks are unparalleled with respect to husbandry and hygiene considerations, occupational health and safety requirements, ergonomics, reduced noise levels and aesthetic appeal.

The design permits an excellent view into all cages and their occupants. Having pioneered tubular S/S construction of racks, Tecniplast today utilizes a 3D-CAD-system design, automated cutting, punching and TIG welding construction processes.

Attention to detail, such as uniform polishing and finishing conclude the work. This is your guarantee for a long-lasting product that offers an exceptional Return on Investment.

Tecniplast unique "T-profile" suspension runners are specifically designed to minimize dirt traps, whilst permitting safe, simple and silent positioning of cages without risk of damage. They are far superior to metal runners or channels of other racks.

Other features are:

- S/S solid top sheet to reduce the exposure to draught and excessive light of the top rows
- Tubular base corners are all rounded for improved safety and to avoid damage of wall covering; four retrofitting plastic bumpers can also be provided on request.

MESH BOTTOM CAGE

Mesh bottom cages are recommended whenever rodents need to be temporary housed on mesh flooring: excrements are collected in a separate PC waste tray. Rats and guinea pigs are housed on 11x11 mm mesh, whilst mice require a 7x7 mm grid spacing. Mesh bottom cages can be either used with Double Runner Style Racks or Individual S/S Support Frame.

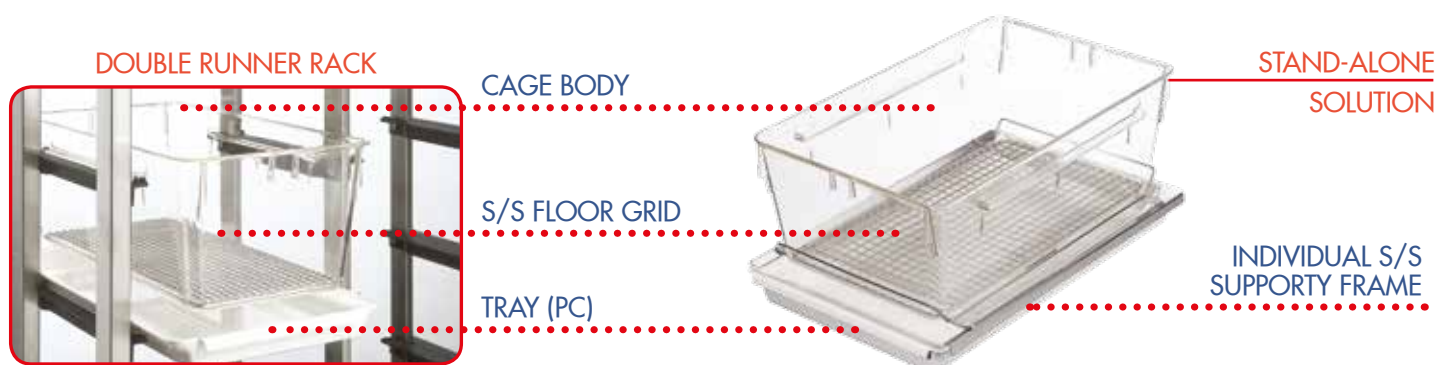
| Cage body | Rack configuration | | | | Rack model | | Dimensions without bumpers L x W x H (mm/in) |
|----------------|--------------------|--------------|------|---------|--------------------------|----------------------------|--|
| | Nr of cages | Design | Rows | Columns | Without bumpers | with bumpers | |
| 1144B | 64 | Single-sided | 8 | 8 | 2B64B1000 | 2B64B1000BW | 1494 x 480 x 1874 / 58.82 x 18.90 x 73.78 |
| 1145T | 42 | Single-sided | 7 | 6 | 2T42B1000 | 2T42B1000BW | 1128 x 500 x 1648 / 44.41 x 19.68 x 64.88 |
| | 48 | Single-sided | 8 | 6 | 2T48B1000 | 2T48B1000BW | 1128 x 500 x 1861 / 44.41 x 19.68 x 73.27 |
| | 64 | Single-sided | 8 | 8 | 2T64B1000 | 2T64B1000BW | 1494 x 500 x 1861 / 58.82 x 19.68 x 73.27 |
| | 128 | Double-sided | 8 | 8 | 2T128B1000 | 2T128B1000BW | 1494 x 865 x 1861 / 58.82 x 34.06 x 73.27 |
| 1264C 1284L | 30 | Single-sided | 6 | 5 | 2CL30B1000 | 2CL30B1000BW | 1240 x 480 x 1871 / 48.82 x 18.90 x 73.66 |
| | 36 | Single-sided | 6 | 6 | 2CL36B1000 | 2CL36B1000BW | 1482 x 480 x 1871 / 58.35 x 18.90 x 73.66 |
| | 48 | Single-sided | 8 | 6 | 2CL48B1000 | 2CL48B1000BW | 1482 x 480 x 1996 / 58.35 x 18.90 x 78.58 |
| | 60 | Double-sided | 6 | 5 | 2CL60B1000 | 2CL60B1000BW | 1240 x 880 x 1871 / 48.82 x 34.65 x 73.66 |
| | 70 | Double-sided | 7 | 5 | 2CL70B1000 | 2CL70B1000BW | 1240 x 880 x 1871 / 48.82 x 34.65 x 73.66 |
| 1290D | 24 | Single-sided | 6 | 4 | 2D24B1000 | 2D24B1000BW | 1214 x 515 x 1877 / 47.80 x 20.28 x 73.90 |
| 1290D 1291H | 20 | Single-sided | 5 | 4 | 2H20B1000 ^{□□} | 2H20B1000BW ^{□□} | 1214 x 515 x 1655 / 47.80 x 20.28 x 65.16 |
| | 20 | Single-sided | 5 | 4 | 2H20B1000H [□] | 2H20B1000HBW [□] | 1214 x 515 x 1877 / 47.80 x 20.28 x 73.90 |
| | 24 | Single-sided | 6 | 4 | 2H24B1000 ^{□□} | 2H24B1000BW ^{□□} | 1214 x 515 x 1947 / 47.80 x 20.28 x 76.65 |
| | 30 | Single-sided | 6 | 5 | 2H30B1000 | 2H30B1000BW | 1510 x 480 x 1947 / 59.45 x 18.90 x 76.65 |
| 2150E | 25 | Single-sided | 5 | 5 | 2E25B1000 | 2E25B1000BW | 1300 x 535 x 1874 / 51.18 x 21.06 x 73.78 |
| | 30 | Single-sided | 6 | 5 | 2E30B1000 | 2E30B1000BW | 1300 x 535 x 1874 / 51.18 x 21.06 x 73.78 |
| 2154F | 20 | Single-sided | 5 | 4 | 2F20B1000 | 2F20B1000BW | 1178 x 580 x 1877 / 46.38 x 22.83 x 73.90 |
| | 25 | Single-sided | 5 | 5 | 2F25B1000 | 2F25B1000BW | 1465 x 580 x 1877 / 57.68 x 22.83 x 73.90 |
| 1500U | 15 | Single-sided | 5 | 3 | 2U15B1000 | 2U15B1000BW | 1239 x 600 x 1791 / 48.78 x 23.62 x 70.51 |
| | 20 | Single-sided | 5 | 4 | 2U20B1000 | 2U20B1000BW | 1642 x 600 x 1791 / 64.65 x 23.62 x 70.51 |
| 1354G | 18 | Single-sided | 6 | 3 | 2G18B1000 [■] | - | 1239 x 690 x 1877 / 48.78 x 27.17 x 73.90 |
| | 20 | Single-sided | 5 | 4 | 2G20B1000 | 2G20B1000BW | 1642 x 690 x 1760 / 64.65 x 27.17 x 69.29 |
| | 20 | Single-sided | 5 | 4 | 2G20B1000H [□] | 2G20B1000HBW [□] | 1642 x 690 x 1877 / 64.65 x 27.17 x 73.90 |
| | 24 | Single-sided | 6 | 4 | 2G24B1000 [■] | 2G24B1000BW [■] | 1642 x 690 x 1877 / 64.65 x 27.17 x 73.90 |
| 2000P | 15 | Single-sided | 5 | 3 | 2P15B1000 | 2P15B1000BW | 1395 x 725 x 1877 / 54.92 x 28.54 x 73.90 |
| | 18 | | 6 | 3 | 2P18B1000LW [■] | 2P18B1000LWBW [■] | 1395 x 725 x 1980 / 54.92 x 28.54 x 77.95 |

□ can be used with raised lid

□□ close distance between cages when filter tops are used

■ to be used with bottle type F

■ ■ cannot be used with filter tops



| Cage body | Rack configuration | | | Rack model with double runners | | Dimensions without bumpers L x W x H (mm/in) | PC body with cut-away base | S/S mesh floor grid 7x7/11x11 mm | Tray (PC) | Individual S/S support frame |
|-------------|--------------------|--------------|--------------|--------------------------------|--------------|--|----------------------------|----------------------------------|--------------------|------------------------------|
| | Nr of cages | Design | Rows/columns | Without bumpers | with bumpers | | | | | |
| 1264C/1284L | 30 | single-sided | 6/5 | 2CL30B2000 | 2CL30B2000BW | 1238 x 480 x 1871 / 48.76 x 18.90 x 73.66 | - 051 | - 524 / - | - 382 | - 905 |
| 1290D | 24 | single-sided | 6/4 | 2D24B2000 | 2D24B2000BW | 1214 x 515 x 1877 / 47.80 x 20.28 x 73.90 | - 051 | - 524 / - 525 | - 382 | - 905 |
| 1291H | 20 | single-sided | 5/4 | 2H20B2000 | 2H20B2000BW | 1214 x 515 x 1877 / 47.80 x 20.28 x 73.90 | - 051 | - 524 / - 525 | - 382 [□] | - 905 [□] |
| 1354G | 20 | single-sided | 5/4 | 2G20B2000 | 2G20B2000BW | 1642 x 690 x 1877 / 64.65 x 27.17 x 73.90 | - 051 | - 524 / - 525 | - 382 | - 905 |

□ 1291H to be ordered as 1290D - 382 / - 905

Whatever your needs are,
we have the
right answer for you!

TECNIPLAST STANDARD CASTORS ARE COATED WITH POLYURETHANE AND WITHSTAND AUTOCLAVE CYCLES AT 121°C/250°F WHEN RACKS ARE NOT LOADED WITH CAGES. ALTERNATIVELY, IN CASE OF FREQUENT AUTOCLAVING, HIGHER HOLDING TEMPERATURES, OR WHEN RACKS ARE AUTOCLAVED FULLY LOADED, SELECT CASTORS WITH GLASS-FIBRE-REINFORCED NYLON WHEELS.

ADJUSTABLE SHELF STYLE RACK



Equipped with brackets at each corner for a quick change of shelf height by screws, the design of this rack allows the selection of the desired number of shelves. Their later addition or removal, moreover, offers a high density capacity as well as great flexibility to accommodate changed cage sizes during the years. They can be used as single or double-sided racks (with cage series 1264C).

Rack Configuration:

- Shelves (available in different lengths).
- Set of four uprights (available in two sizes).
- Set of four castors (two unbraked and two braked).

| Adjustable shelf style rack configuration | | |
|---|-------------------------------------|----------------------------|
| Cat. No. | Description | Dimensions L x W (mm/in) |
| 2UNR0060 | shelf | 1524 x 585 / 60.00 x 23.03 |
| 2UNR0065 | shelf | 1651 x 585 / 65.00 x 23.03 |
| 2UNR0070 | shelf | 1780 x 585 / 70.08 x 23.03 |
| 2UNRPT1676 | set of 4 uprights | H 1676° / 65.98° |
| 2UNRPT1834 | set of 4 uprights | H 1834° / 72.20° |
| ACROTLIB125CX ^{□□} | Polyurethane coated unbraked castor | Ø 125 / 4.92 |
| ACROTFRE125CX ^{□□} | Polyurethane coated braked castor | Ø 125 / 4.92 |

| Cage body | Number of cages per shelf | | |
|---------------|---------------------------|------------|------------|
| | Shelf length (mm/in) | | |
| | 1524/60.00 | 1651/65.00 | 1780/70.08 |
| 1144B - 1145T | 8 | 9 | 10 |
| 1264C | 12 | 14 | 14 |
| 1284L | 6 | 7 | 8 |
| 1290D - 1291H | 5 | 5 | 6 |
| 2150E | 5 | 6 | 7 |
| 2154F | 5 | 5 | 6 |
| 1500U | 3 | 4 | 4 |

□ does not include the castor height (= 155 mm)

□□ to be ordered twice

DEMOUNTABLE SHELF STYLE RACK



Completely demountable with shelves, easily removable without tools.

Solid sheet shelves have side- and back-lips for added security of cage position.

Normally used as single-sided racks only.

Available in two different sizes.

| Cage body | Nr of cages per shelf | Dimensions L x W x H (mm/in) | Nr of shelves | Cat. No. |
|-------------------------|-----------------------|--|---------------|----------|
| 1144B | 7 | 1210 x 390 [□] x 1843 47.64 x 15.35 [□] x 72.56 | 6 | 2UN1D500 |
| 1145T | 6 | | | |
| 1264C 1284L 2150E | 5 | | | |
| 1290D 1291H | 6 | 1773 x 572 x 1868 69.80 x 22.50 x 73.54 | 5 | 2UN2D500 |
| 1500U 1354G | 4 | | | |

□ overall width including wheels = 480 mm / 18.90 in

WELDED SHELF STYLE RACK



Fully welded for maximum strength and rigidity.

Simple design for easier cleaning and significant comparative low cost.

Only one size available.

| Cage body | Nr of cages per shelf | Dimensions L x W x H (mm/in) | Nr of shelves | Cat. No. |
|----------------|-----------------------|--|---------------------|----------|
| 1144B | 7 | 1307 x 547 x 1712 51.46 x 21.54 x 67.40 | 5 (6 [□]) | 2UN5B106 |
| 1145T | 6 | | | |
| 1264C 1284L | 5 | 1307 x 547 x 1712 51.46 x 21.54 x 67.40 | 5 (6 [□]) | 2UN5B106 |
| 1290D | 4 | | | |

□ the roof can be used as extra shelf

SMALL RODENTS • DRAWER STYLE CAGING

- DESIGNED FOR TOXICOLOGY AND PHARMACOLOGY STUDIES, OPTIMAL FOR APPLICATIONS WHERE FREQUENT ANIMAL HANDLING IS REQUIRED
- DRAWER-STYLE CAGE BODY EXTRACTION FOR A QUICK AND EASY ACCESS TO THE CAGE OCCUPANTS
- MAXIMIZED ERGONOMICS FOR EASY DAILY OPERATIONS AND WORKFLOWS. NO NEED TO REMOVE THE CAGE FROM THE RACK FOR MOST OF THE OPERATIONS:
 - REDUCTION OF THE RISK OF STAFF INJURIES AND MUSCULO-SKELETAL DISEASES
 - QUICKER AND SAFER PROCEDURES
- OPTIMAL VISIBILITY FOR A QUICKER DAILY CHECK



- Two cage sizes available to adapt to any housing requirement:
 - 1500U: 1500 cm² floor area
 - 2000P: 2065 cm² floor area
- External feeder and water bottle for quicker and easier refilling: ergonomic and time-saver
- AISI 316 S/S wire bar lids integrated to the rack frame that can be detached with no need for any tool: compatible with common washing equipment
- Plastic card holder with flip-up-stay-up feature and plastic runners to reduce noise- and vibration-induced animal stress



RACK 2P15



EASY ACCESS TO ANIMALS



EASY FEEDER REFILLING

CAGE

| Cage type | Floor area (cm ² /sq in) | Overall dimensions L x W x H (mm/in) | Feeder capacity l/fl oz (US)/fl oz (UK) | Water bottle ml/fl oz (US)/fl oz (UK) |
|-----------|-------------------------------------|---|---|---------------------------------------|
| 1500U | 1500 232.50 | 480 x 375 x 210 18.90 x 14.77 x 8.27 | 1.8 / 60.87 / 63.36 | 2 x (700 / 23.67 / 24.64) |
| 2000P | 2065 320.07 | 612 x 435 x 216 24.09 x 17.13 x 8.50 | 2.4 / 81.15 / 84.47 | 2 x (700 / 23.67 / 24.64) |

RACK

| Cage type | Configuration | Overall dimensions L x W x H (mm/in) |
|-----------|---------------------------------|---|
| 1500U | 15 cages (3W x 5H) single sided | 1239 x 620 x 1688.5 / 48.78 x 24.41 x 66.48 |
| 1500U | 20 cages (4W x 5H) single sided | 1642 x 620 x 1688.5 / 64.45 x 24.41 x 66.48 |
| 2000P | 15 cages (3W x 5H) single sided | 1395 x 725.5 x 1645 / 54.92 x 28.56 x 64.76 |
| 2000P | 20 cages (4W x 5H) single sided | 1850 x 725.5 x 1645 / 72.83 x 28.56 x 64.76 |



RACK 2U20



EASY BOTTLE REPLACEMENT



RABBITS, GUINEA PIGS & FERRETS



R-SUITE



GP-SUITE



F-SUITE

THE "SUITE" PRODUCT LINE IS SPECIFICALLY DESIGNED FOR LAGOMORPHS, BIG RODENTS AND MUSTELIDS.

IT FEATURES A THREE-DIMENSIONAL ENRICHED ENVIRONMENT WITH LARGE AND COMFORTABLE SPACES WHERE CAGE INHABITANTS CAN SOCIALIZE, PLAY AND REST.

EVERYTHING WITH A FUNCTIONAL DESIGN IN MIND TO ACHIEVE THE BEST LEVEL OF ANIMAL WELFARE, ERGONOMICS FOR THE OPERATORS, VISIBILITY FOR AN EASY HEALTH CHECK AND THE LOWEST RUNNING COSTS.

TECNIPLAST OFFERS A WIDE RANGE OF DIFFERENT CAGE SIZES, COMPLYING WITH THE MAIN INTERNATIONAL GUIDELINES:

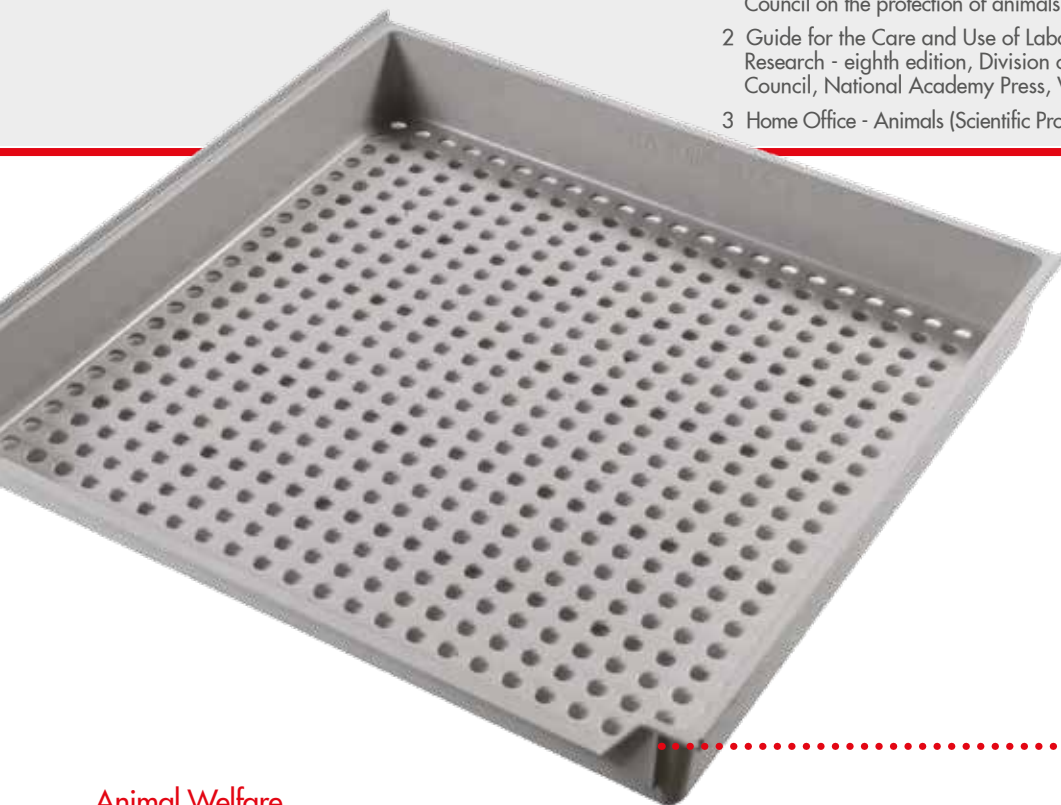
- X-TYPE CAGE - FLOOR AREA 4264 CM²
- R-TYPE CAGE - FLOOR AREA 4670 CM²
- P-TYPE CAGE - FLOOR AREA 5456 CM²

| | Final body weight (kg) | Minimum floor area (cm ² /ft ²) | Minimum height (cm/in) |
|---------------------|------------------------|--|------------------------|
| EUROPE ¹ | < 3 | 3500 | 45 |
| | 3 - 5 | 4200 | 45 |
| | > 5 | 5400 | 60 |
| USA ² | < 2 | 1400 / 1.5 | 40.5 / 16 |
| | 2 - 4 | 2800 / 3.0 | 40.5 / 16 |
| | 4 - 5.4 | 3700 / 4.0 | 40.5 / 16 |
| | > 5.4 | ≥ 4600 / ≥ 5.0 | 40.5 / 16 |
| UK ³ | < 2 | 2000 | 40 |
| | 2 - 4 | 4000 | 45 |
| | 4 - 6 | 5400 | 45 |
| | > 6 | 6000 | 45 |

1 Requirements for Establishments and for the Care of Accomodation of Animals, Annex III of the Directive 2010/63/EU of the European Parliament and of the Council on the protection of animals used for scientific purposes, 22 September 2010

2 Guide for the Care and Use of Laboratory Animals, Institute of Laboratory Animal Research - eighth edition, Division on Earth and Life Studies, National Research Council, National Academy Press, Washington D.C. 2011

3 Home Office - Animals (Scientific Procedures) Act 1986 Amendment Regulations 2012



INJECTION MOULDED NORYL CAGE

Animal Welfare

- The injection moulded perforated Noryl floor assures:
 - No sharp edges to enhance animal comfort
 - Fast draining and drying design to maintain a clean environment
 - A warm and comfortable environment for rabbits
- The raised shelf and nesting box, together with the internal height, creates an ideal three-dimensional enriched environment
- The rack interlinking system (standard for all racks) increases floor space and allows communication between cages for social housing
- The stainless-steel rack with noise-free Polycarbonate side panels helps to avoid animal stress

Visibility

Transparent removable side panels allow optimal visibility of the entire cage volume: quick and easy daily check.



X-TYPE



R-TYPE



P-TYPE



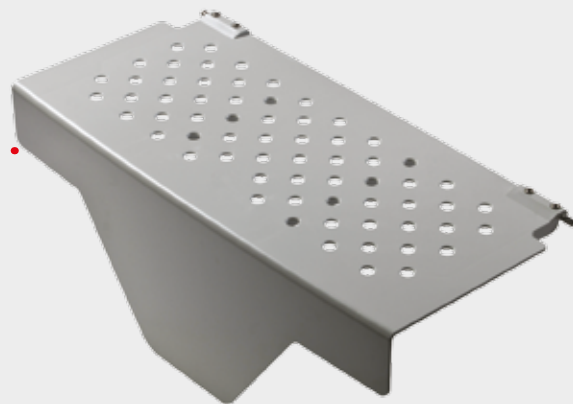
PUSH-AND-CLOSE GATE
WITH SAFETY LOCK SYSTEM



TRANSPARENT SIDE PANELS - INTERLINKED RACKS



3D ENVIRONMENT - RAISED SHELF



3D ENVIRONMENT - OPTIONAL NESTING BOX



CAGE INTERLINKING - SOCIAL HOUSING

Ergonomics and Quality

- Injection moulded Noryl cage means:
 - Smooth edges that eliminate dirty traps, ensuring perfect cleaning
 - Stacking lugs for proper stacking, rather than "sticking"
 - Thickness uniformity for a lighter and more resistant cage
 - Stress and tension free plastic offering greater thermal and mechanical resistance for a long lasting product that withstands repetitive washing and autoclaving cycles.
- A push-and-close system allows the gate to be closed easily even while holding animals; the gate features also a safety lock system to avoid animals escaping from the cage
- A fast-dry roof design results in quicker and easier washing procedures
- Rounded corners and lighter rack ensure easy and safe transportation
- The most compact housing solution in the market for a high density

Low running costs

The absence of dirty traps, the quick drying properties and the consequent quicker washing procedures, together with the optimal ergonomics and the longer lifetime due to the enhanced mechanical resistance result in dramatically lower running costs.



FAST-DRY ROOF DESIGN

CAGE

| | X | R | P |
|---|--|---|---|
| Floor area (cm ² / ft ²) | 4264 / 4.59 | 4670 / 5.03 | 5456 / 5.87 |
| Overall dimensions W x D x H (mm / in) | 713 x 716 x 115 28.06 x 28.19 x 4.53 | 743 x 716 x 114 29.27 x 28.19 x 4.49 | 870 x 740 x 131 34.25 x 29.13 x 5.16 |
| Internal height (mm / in) | 476 / 18.74 | 471 / 18.55 | 604 / 23.76 |
| Plastic type | Noryl - 2-year warranty | | |
| Cage body | Autoclavable, high stackability | | |
| Waste tray | Autoclavable, high stackability, simmetric (no back, no front) | | Autoclavable, high stackability |
| Feeder capacity | 2.2 l / 74.39 oz (US) / 77.43 oz (UK) | | |
| Bottle capacity ^o | 750 ml / 25.36 oz (US) / 26.40 oz (UK) | | |

^o can accomodate multiple water bottles

RACK

| Cage type | Rack configuration | Overall rack dimensions L x W x H (mm/in) |
|-----------|--------------------|---|
| X | 3 cages (1W x 3H) | 784 (817 ^{oo}) x 820 (869 ^{oo}) x 1830 30.87 (32.17 ^{oo}) x 32.28 (34.20 ^{oo}) x 72.05 |
| R | 3 cages (1W x 3H) | 810 (843 ^{oo}) x 820 (870 ^{oo}) x 1830 31.89 (33.19 ^{oo}) x 32.28 (34.26 ^{oo}) x 72.05 |
| P | 2 cages (1W x 2H) | 937 (970 ^{oo}) x 845 (895 ^{oo}) x 1718 36.89 (38.19 ^{oo}) x 33.27 (35.25 ^{oo}) x 67.64 |

^o with interlinking device

^{oo} with feeder and water bottle

Note: 3 levels "P" type racks are available upon request

OPTIONS

- Auto watering system
- S/S feeder with anti-dust cover
- S/S hay feeder
- Enlongated waste tray for "X" type cage

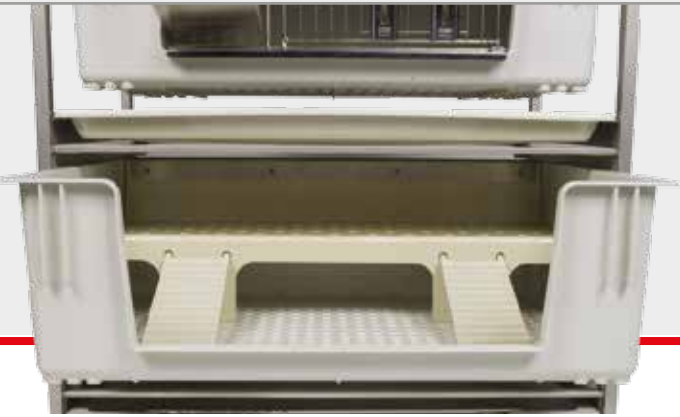
ACCESSORIES

- Noryl nesting box
- Additional water bottle



- 1 Requirements for Establishments and for the Care of Accommodation of Animals, Annex III of the Directive 2010/63/EU of the European Parliament and of the Council on the protection of animals used for scientific purposes, 22 September 2010
- 2 Guide for the Care and Use of Laboratory Animals, Institute of Laboratory Animal Research - eighth edition, Division on Earth and Life Studies, National Research Council, National Academy Press, Washington D.C. 2011
- 3 Home Office - Animals (Scientific Procedures) Act 1986 Amendment Regulations 2012

| | Final body weight (g) | Minimum floor area (cm ²) | Floor area per animal - groups (cm ² /in ²) | Minimum height (cm/in) |
|---------------------|-----------------------|---------------------------------------|--|------------------------|
| EUROPE ¹ | < 200 | 1800 | 200 | 23 |
| | 200 - 300 | 1800 | 350 | 23 |
| | 300 - 450 | 1800 | 500 | 23 |
| | 450 - 700 | 2500 | 700 | 23 |
| | > 700 | 2500 | 900 | 23 |
| USA ² | < 350 | - | 387 / 60 | 17.8 / 7 |
| | > 350 | - | ≥ 651.5 / ≥ 101 | 17.8 / 7 |
| UK ³ | < 150 | 700 | 200 | 20 |
| | 150 - 250 | 700 | 300 | 20 |
| | 250 - 350 | 900 | 400 | 20 |
| | 350 - 450 | 900 | 500 | 23 |
| | 450 - 550 | 900 | 600 | 23 |
| | 550 - 650 | 1000 | 700 | 23 |
| | > 650 | 1250 | 750 | 23 |



Animal Welfare

- Injection moulded perforated Noryl floor:
 - No sharp edges to enhance animal comfort
 - Extra holes on the corners to speed up the draining and drying processes and maintain a clean environment
 - Warm and comfortable cage
- A raised shelf with ramps creates a three-dimensional enriched environment

Ergonomics and cost-effective

- Injection moulded Noryl cage means:
 - Smooth edges that eliminate dirty traps, ensuring perfect cleaning
 - Stacking lugs for proper stacking, rather than "sticking."
 - Thickness uniformity for a lighter and more resistant cage
 - Stress- and tension- free plastic offering greater thermal and mechanical resistance for a long lasting product that withstands repetitive washing and autoclave cycles
- Rounded corners and lighter rack ensure easy and safe transportation
- Compact housing solution for an higher density

Flexibility

Available either with solid or perforated bottom to accommodate any research need.



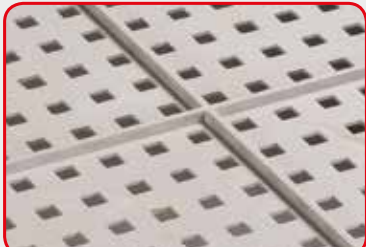
| Cage bottom type | Rack configuration | Overall rack dimensions L x W x H (mm/in) |
|--------------------------|----------------------|--|
| Solid | 5 cages (1 W x 5 H) | 860 x 780 (846°) x 1656 33.86 x 30.71 (33.31°) x 65.20 |
| Solid | 10 cages (2 W x 5 H) | 1700 x 780 (846°) x 1656 66.93 x 30.71 (33.31°) x 65.20 |
| Perforated ^{□□} | 4 cages (1 W x 4 H) | 860 x 780 (846°) x 1656 33.86 x 30.71 (33.31°) x 65.20 |
| Perforated ^{□□} | 8 cages (2 W x 4 H) | 1700 x 780 (846°) x 1656 66.93 x 30.71 (33.31°) x 65.20 |

Cage specifications and dimensions

- "W" type solid/perforated cage base
- Size (L x W x H): 814 x 610 x 256 mm
32.95 x 24.02 x 10.08 in
- Floor area: 4000 cm² / 4.3 ft²
- Internal height: 281 mm / 11.08 in

[□] with feeders and water bottles

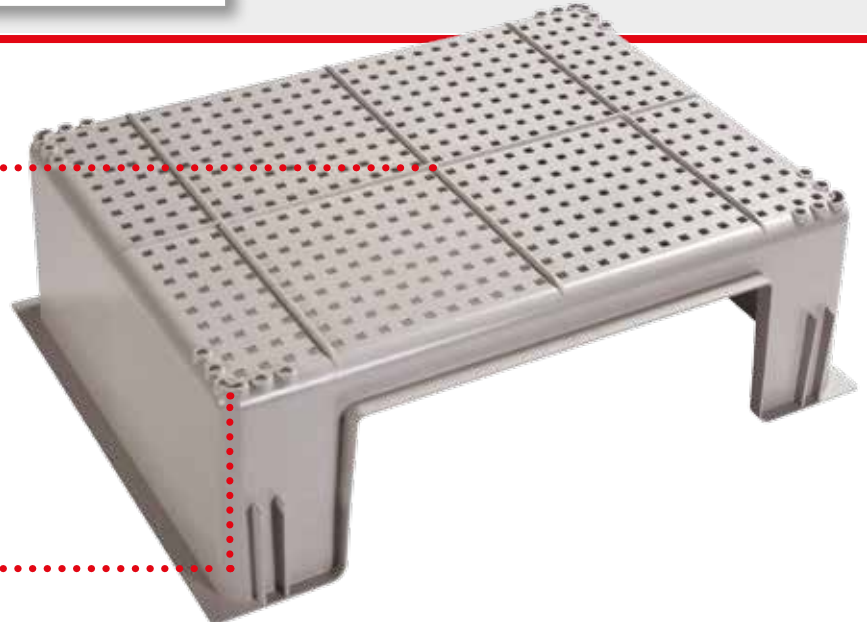
^{□□} the rack with perforated cages comes complete with waste trays



INJECTION MOULDED BASE:
NO DIRTY TRAPS



EXTRA HOLES IN THE
FOUR CORNERS



WITH PERFORATED
BOTTOM

WITH SOLID BOTTOM

| | Final body weight (g) | Minimum floor area (cm ²) | Floor area per animal (groups) | Minimum height (cm) |
|---------------------|-----------------------|---------------------------------------|--------------------------------|---------------------|
| EUROPE ¹ | < 600 | 4500 | 1500 | 50 |
| | > 600 | 4500 | 3000 | 50 |
| | adult males | 6000 | 6000 | 50 |
| | jill and litter | 5400 | 5400 | 50 |
| UK ² | < 800 | 2250 | 1500 | 50 |
| | > 800 | 4500 | 3000 | 50 |

1 Requirements for Establishments and for the Care of Accommodation of Animals, Annex III of the Directive 2010/63/EU of the European Parliament and of the Council on the protection of animals used for scientific purposes, 22 September 2010

2 Home Office - Animals (Scientific Procedures) Act 1986 Amendment Regulations 2012

Cage specifications and dimensions

"P" TYPE SOLID CAGE BASE

- Size (L x W x H): 870 x 740 x 130 mm
34.25 x 29.13 x 5.118 in
- Floor area: 5456 cm² / 5.87 ft²
- Internal Height: 600 mm / 23.62 in

Rack specifications and dimensions

- N. of Cages: 2 (1W x 2H)
- Overall Rack Dimensions (L x W x H):
940 x 845 (+160) x 1700 mm
37.01 x 33.27 (+6.299) x 66.93 in



ENVIRONMENTAL ENRICHMENT: RAISED SHELF



ENVIRONMENTAL ENRICHMENT: INTERLINKING TUBE



Animal Welfare

- The rack interlinking increases floor space and allows communication between cages for social housing
- The interlinking tube connects two cages to enhance social behaviour
- The raised shelf and nesting box, together with the internal height, create an ideal three-dimensional enriched environment
- The newly designed stainless-steel rack with noise-free Polycarbonate panels helps to avoid animal stress
- Transparent polycarbonate gate avoids air drafts on the animal

Ergonomics, Functionality and Cost-effectiveness

- A push-and-close system allows to easily close the gate even while holding animals; the gate features also a safe locking system to avoid animals escaping from the cage
- A fast-dry roof design results in quicker and easier washing procedures
- Rounded corners and lighter rack ensure easy and safe transportation.

Visibility: easy daily check

Transparent removable side panels allow optimal visibility of the entire cage volume: quick and easy daily check





 **TECNIPLAST**
innovation through passion

HEADQUARTERS

ITALY | Tel. +39 0332 809711 · www.tecniplast.it · E-mail: tecnicom@tecniplast.it; venditeitalia@tecniplast.it

SISTER COMPANIES

AUSTRALIA/NEW ZEALAND | Tel. + 61 2 8845 6500 · www.tecniplast.it · E-mail: info@tecniplast.com.au

CHINA | Tel. + 86 (0)21 50810920 · www.tecniplast.cn · E-mail: tecniplastchina@tecniplast.it

FRANCE | Tél. +33 (0)4 72 52 94 41 · www.tecniplast.fr · E-mail: info@tecniplast.fr

GERMANY | Tel. +49 (0)8805 921320 · www.tecniplast.de · E-mail: info@tecniplast.de

UNITED KINGDOM | Tel. + 44 (0)845 0504556 · www.tecniplast.it · E-mail: info@tecniplastuk.com

JAPAN | Tel. +81 (0)3 5770 5375 · www.tecniplast.it · E-mail: info@tecniplastjapan.co.jp

USA | Toll Free: +1 877.669.2243 · www.tecniplastusa.com · E-mail: info@tecniplastusa.com

CANADA | Toll Free: +1 855.347.8718 · www.tecniplastcanada.com · E-mail: info@tecniplastcanada.com

TO FIND YOUR LOCAL DISTRIBUTOR, PLEASE VISIT WWW.TECNIPLAST.IT