

- **Designed for toxicology and pharmacology studies: maximum ergonomics for frequent animal handling**
- **Conventional drawer-style: high flexibility to match any housing requirement**
- **IVC drawer-style: improved staff protection and animal welfare**
- **Dynamic Containment Cage: maximum personnel protection against hazardous compounds**





## Small Rodents Drawer-Style Caging

### Introduction & Applications

- Designed for toxicology and pharmacology studies, optimal for applications where **frequent animal handling** is required.
- Drawer-style cage body extraction for a **quick and easy access to the cage occupants**.
- Maximized ergonomics for easy daily operations and workflows. **No need to move the cage to a changing station** for most of the operations:
  - **Reduction of the risk of staff injuries and musculo-skeletal diseases.**
  - **Quicker and safer procedures.**
- Optimal visibility for a **quicker daily check**.
- Different caging systems for different level of personnel protection.

### 1/Conventional Drawer-Style

- Two cage sizes available to **adapt to any housing requirement**:
  - 1500U 1500 cm<sup>2</sup> floor area
  - 2000P 2065 cm<sup>2</sup> floor area
- External feeder and water bottle for quicker and easier refilling: **ergonomic and time-saver**.
- AISI 316 S/S wire bar lids integrated to the rack's frame that can be detached with no need for any tool: **compatible with common washing equipment**.
- Plastic card holder with flip-up-stay-up feature and plastic runners to **reduce noise- and vibration-induced animal stress**.

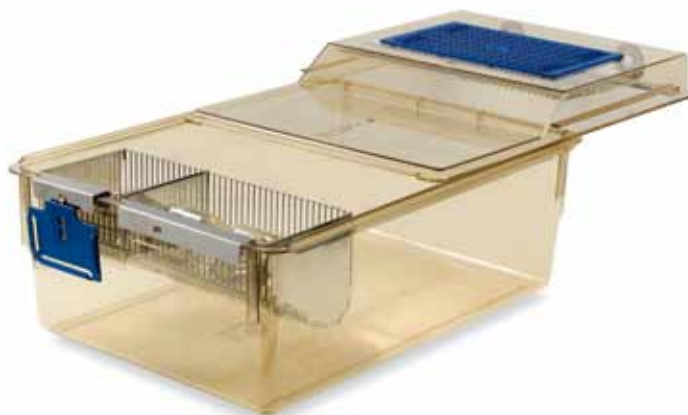
### 2/Sealsafe IVC Drawer-Style

- Exhaust airflow for a negative intra-cage pressure, improving allergens and chemicals containment **for personnel protection**.
- 2065 sq cm cage for high density animal housing: enhanced socialization with minimized animal stress for **more reliable research outcomes**.

### 3/Dynamic Containment Cage (DCC)

- BOOST Function:  
The increased ventilation rate creates an air flow barrier and real negative intra-cage pressure whenever the cage is opened: **maximum personnel protection against hazardous compounds and allergens also when cages are open**.
- Specifically designed intra-cage ventilation pattern: **extended cage change interval for lower running costs**.
- Negative pressure mode: **no contaminants** are spread into the room, ensuring **protection for the operators**.
- Automatic Visual Docking Indicator and Cage-Self Locking System: operator can immediately see if the cage is properly in place for a **safer and easier daily check**.

### Introduction & Applications



Caging systems range: conventional, IVC, DCC

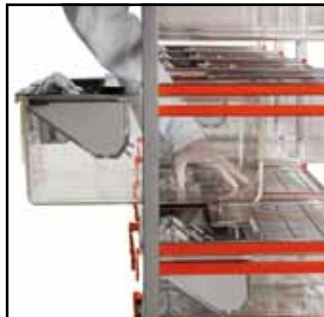
## Conventional Drawer-Style



Conventional drawer-style rack



Easy feeder refilling



Easy access to cage occupants

## Sealsafe IVC Drawer-Style



Easy access to cage occupants

### TECHNICAL SHEET

#### Conventional Drawer-Style

##### Cage:

Cage Type	Floor Area cm <sup>2</sup> /sq in	Overall Dimensions (L x W x H) - mm/in	Feeder Capacity l / fl oz (US) / fl oz (UK)	Water Bottle ml / fl oz (US) / fl oz (UK)
1500U	1500 232.5	480 x 375 x 210 18.90 x 14.77 x 8.27	1.8 / 60.87 / 63.36	2 x (700 / 23.67 / 24.64)
2000P	2065 320.1	610 x 435 x 215 24.02 x 17.13 x 8.46	2.4 / 81.15 / 84.47	2 x (700 / 23.67 / 24.64)

##### Racks:

Cage Type	Configuration	Overall Dimensions (L x W x H) - mm/in
1500U	15 cages (3 w x 5 h) single sided	1239 x 620 x 1688.5 / 48.78 x 24.41 x 66.48
1500U	20 cages (4 w x 5 h) single sided	1642 x 620 x 1688.5 / 64.65 x 24.41 x 66.48
2000P	15 cages (3 w x 5 h) single sided	1395 x 725.5 x 1645 / 54.92 x 28.56 x 64.76
2000P	20 cages (4 w x 5 h) single sided	1850 x 725.5 x 1645 / 72.83 x 28.56 x 64.76

#### Sealsafe IVC Drawer-Style

##### Cage:

Cage Type	Floor Area cm <sup>2</sup> /sq in	Overall Dimensions (L x W x H) - mm/in	Feeder Capacity l / fl oz (US) / fl oz (UK)	Water Bottle ml / fl oz (US) / fl oz (UK)
2000P	2065 320.1	613 x 435 x 273 24.13 x 17.13 x 10.76	2.4 / 81.15 / 84.47	2 x (400 / 13.53 / 14.08)

##### Racks:

Cage Type	Configuration	Overall Dimensions (L x W x H) - mm/in
2000P	15 cages (3 w x 5 h) single sided	1395 x 735 x 1875 (1954*) / 54.92 x 28.94 x 73.81 (76.94*)

\*With supply removable plenum

#### Dynamic Containment Cage (DCC)

##### Cage:

Cage Type	Floor Area cm <sup>2</sup> /sq in	Overall Dimensions (L x W x H) - mm/in	Feeder Capacity l / fl oz (US) / fl oz (UK)	Water Bottle ml / fl oz (US) / fl oz (UK)
DCC915	915 141.8	519 x 282 x 273 20.42 x 11.10 x 10.74	1.38 / 46.66 / 45.57	450 / 15.22 / 15.84

##### Racks:

Cage Type	Configuration	Overall Dimensions (L x W x H) - mm/in
DCC915	20 cages (5 w x 4 h) single sided	1506 x 620 x 1500 / 59.27 x 24.41 x 59.06
DCC915	24 cages (6 w x 4 h) single sided	1800 x 620 x 1500 / 70.87 x 24.41 x 59.06

#### Air Handling Unit:

##### Overall Dimensions (W x D x H):

462 x 590 x 1509 mm • 18.18 x 23.22 x 59.40 inch

##### Power Consumption:

≤ 200 W

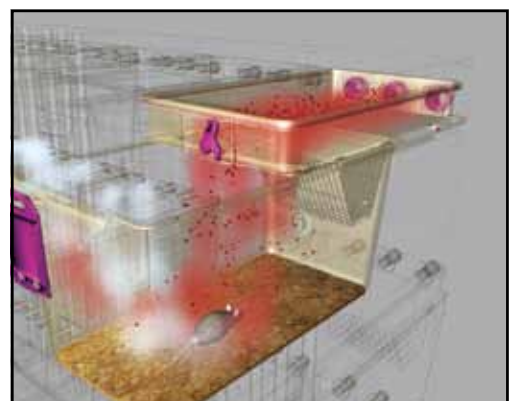
##### Heat Loss:

≤ 50 W

## Dynamic Containment Cage (DCC)



BOOST function for containment also when cages are open



#### ENVIRONMENTAL SUSTAINABILITY: MINIMIZE IMPACT MAXIMIZING VALUE

What Tecniplast did to become leader in sustainability:

##### Company:

- Quality Management System Certification according to ISO 9001 and Environmental Management System Certification according to ISO 14001.
- Certified Environmental Report according to Eni Foundation Enrico Mattei Guidelines.

##### Products:

- Life Cycle Assessment (LCA) according to ISO 14040 and ISO 14044.
- Carbon Footprint according to PAS 2050.
- Environmental Data Sheet according to ISO 14025.
- Contribution to credits under the LEED rating system.



ISO-9001  
Cert. n° 0875



ISO-14001  
Cert. n° 0256A/0



##### HEADQUARTERS

**ITALY** | Tel. +39 0332 809711 • [www.tecniplast.it](http://www.tecniplast.it) • E-mail: [tecnicom@tecniplast.it](mailto:tecnicom@tecniplast.it)

##### SISTER COMPANIES

**AUSTRALIA/NEW ZEALAND** | Tel. + 61 2 8845 6500 • [www.tecniplast.it](http://www.tecniplast.it) • E-mail: [info@tecniplast.com.au](mailto:info@tecniplast.com.au)

**CHINA** | Tel. + 86 21 50810920 • [www.tecniplast.cn](http://www.tecniplast.cn) • E-mail: [tecniplastchina@tecniplast.it](mailto:tecniplastchina@tecniplast.it)

**FRANCE** | Tél. 04 72 52 94 41 • [www.tecniplast.fr](http://www.tecniplast.fr) • E-mail: [info@tecniplast.fr](mailto:info@tecniplast.fr)

**GERMANY** | Tel. 08805 921320 • [www.tecniplast.de](http://www.tecniplast.de) • E-mail: [info@tecniplast.de](mailto:info@tecniplast.de)

**UNITED KINGDOM** | Tel. 0845 0504556 • [www.tecniplast.it](http://www.tecniplast.it) • E-mail: [info@tecniplastuk.com](mailto:info@tecniplastuk.com)

**JAPAN** | Tel. + 03 5770 5375 • [www.tecniplast.it](http://www.tecniplast.it) • E-mail: [info@tecniplastjapan.co.jp](mailto:info@tecniplastjapan.co.jp)

**USA** | Toll Free: 877.669.2243 • [www.tecniplastusa.com](http://www.tecniplastusa.com) • E-mail: [info@tecniplastusa.com](mailto:info@tecniplastusa.com)

**CANADA** | Toll Free: 855.347.8718 • [www.tecniplastcanada.com](http://www.tecniplastcanada.com) • E-mail: [info@tecniplastcanada.com](mailto:info@tecniplastcanada.com)

To find your local distributor, please visit [www.tecniplast.it](http://www.tecniplast.it)

Tecniplast reserves the right to change or modify product and or specifications without notice or obligation.  
Small Rodents Drawer Style Caging is a Tecniplast trademark.

## Related Products

To maximise operational efficiency and learn more about these products contact your local representative.



**BDS+ Bedding Dispensing System.** Compact, stand alone clean Bedding Dispensing System. Suitable for dosing of all kinds of free flowing bedding materials combining an efficient operator protection from allergens.



**GP 900 Series Rack Washer.** Designed specifically to meet the throughput needs of medium to large size facilities, these machines will live up to your highest expectations in terms of maximum cleaning efficiency, safety, environmentally-friendly and quality construction.



The **DS36** is a cabinet with a hood on top that draws air from the environment into the working area at an average speed of 0.6 m/s, it also creates a barrier that protects both the operator and the environment from airborne allergens and contaminants contained within the working area.